



University of  
South Australia

# STUDY IN 2025

YOUR PROGRAM GUIDE



**WE'RE #1 IN  
AUSTRALIA  
FOR GRADUATE  
EMPLOYABILITY**

## UniSA Acknowledgement of Peoples and Country

UniSA respects the Kurna, Boandik and Barngarla Peoples' spiritual relationship with their country.



Artist: Ngupulya Pumani

Find out more about the University's commitment to reconciliation at

[unisa.edu.au/RAP](https://unisa.edu.au/RAP)



University of South Australia



THE UNIVERSITY of ADELAIDE

## Adelaide University

*a new university for South Australia*

We're planning for an exciting new future.

The new Adelaide University, which is targeted to open in January 2026, will combine the strengths of the University of South Australia (UniSA) and the University of Adelaide to offer contemporary curriculum aligned to industry and enterprise, provide more flexible and accessible ways to study, and aim to deliver the best in research, student experience and graduate outcomes.

There are no changes for 2025 entry. If you start your studies with UniSA or the University of Adelaide, you'll be highly supported in your transition to the new institution in either your existing or an equivalent program. Graduates from 2026 onwards will receive their award from the new Adelaide University.

*A new 'Adelaide University' is subject to legal and regulatory approvals.*



Discover more at [adelaideuni.edu.au](https://adelaideuni.edu.au)

# STUDY AT SA'S #1 UNIVERSITY FOR GRADUATE CAREERS 16 YEARS RUNNING

UniSA is a place for unstoppable people.  
You'll learn from experts, connect with industry, go beyond the classroom and graduate ahead of the pack.  
Where you go and what you do will have no limits – you'll be unstoppable.

Find out more



Cover: QILT Employer Satisfaction Survey, 2020-22 – Employability Skills Indicator. Public universities.

Page 1: Graduate Destinations Survey 2007-2015 and Graduate Outcomes Survey 2016-2022 (Domestic Undergraduate Full-time Employment Indicator for SA public universities).

# GET THE UNSTOPPABLE ADVANTAGE

## PRACTICAL LEARNING

You'll learn in a highly practical environment. Complete real-world projects, industry internships and professional placements, developing the skills required for tomorrow's graduates.

## FLEXIBLE STUDY

Flexibility matters, so we offer a range of study options, including online, blended, part-time and accelerated learning. When it comes to balancing your studies, you can explore a combination of on-campus and online learning, or can choose one of our fully flexible degrees through UniSA Online.

## INDUSTRY CONNECTIONS

We collaborate with more than 2,500 companies worldwide to bring our students placement, project, research and work opportunities. Connect with industry during your studies and benefit from curriculum informed by the latest trends and practices.

## TOP TEACHERS

Make your study experience relevant by learning from highly qualified academics and industry professionals who are experts in their field and share real insights in the classroom.

## MODERN FACILITIES

Study in modern, purpose-built facilities on campus fitted with the latest tools and technologies, including state-of-the-art laboratories, collaborative learning areas, creative studios, workshops and simulation spaces.

## GLOBAL OPPORTUNITIES

Become a global citizen through an overseas student exchange, short-term program, internship, volunteering opportunity or study tour. You can also explore our range of virtual experiences.

## EMBRACING ABORIGINAL KNOWLEDGES

At UniSA, we embrace the significance of nurturing respect and awareness of diverse First Nations knowledges. We are actively engaged in the process of weaving Aboriginal Knowledges into student learning. Our commitment stems from the belief that this inclusive approach enhances the educational experience and fosters a greater understanding of Australia's diverse heritage.

## #1 IN SA FOR QUALITY EDUCATION AND EXPERIENCE

Compared (QILT) Student Experience Survey 2020-21, Overall Quality of Educational Experience Indicator (Undergraduate). SA public universities.



# YOUR FUTURE, GUARANTEED

UniSA Guaranteed Entry – it's a sure thing



Make us your first preference

+



Achieve the guaranteed Year 12 subject grades

or



Achieve the guaranteed Selection Rank

or



Achieve the guaranteed TAFE/VET qualification

That's it – you're in. We'll automatically assess you on your best result.

## YEAR 12 GRADES GUARANTEED ENTRY

UniSA offers guaranteed entry based on your three best Year 12 subject grades for most degrees. If you achieve the selection grades and you put us as your first preference, that's it, you're automatically in<sup>1</sup>.

## SELECTION RANK GUARANTEED ENTRY

UniSA has set guaranteed entry scores for most of our degrees. This means, that if you achieve that set Selection Rank and you put us as your first preference, you're in. There's nothing more you have to do<sup>2</sup>.

## TAFE/VET GUARANTEED ENTRY

If you have successfully completed the set TAFE/VET qualification for your preferred UniSA degree, you'll automatically receive an offer<sup>2</sup>.

## Don't forget your adjustment factors

High school students applying for university might also be eligible for adjustment factors. These are based on set equity factors and/or subject choices. These are added to your Year 12 results, giving you a more competitive Selection Rank which can be confirmed in your SATAC Self-Service Portal.



See what you might be eligible for with UniSA's Guaranteed Entry Calculators.

[unisa.edu.au/guaranteed](https://unisa.edu.au/guaranteed)

<sup>1</sup>Year 12 subjects need to be 20-credit Stage 2 Tertiary Admission Subjects (TAS). Students also need to achieve a minimum ATAR of 50.

<sup>2</sup>Some degrees also have prerequisites and other eligibility criteria that you'll still have to meet. Application timelines and fees also apply.

# YOUR STUDY EXPERIENCE

## FIND THE DEGREE FOR YOU

We offer more than 200 world-class degrees across a wide range of study and career areas. It's important that you do your research and find the degree that's right for you. Look at what subjects you'll study and the different careers they can lead to – do they sound like things you're interested in?

Explore our degrees:

[unisa.edu.au/study](https://unisa.edu.au/study)

Download a brochure:

[unisa.edu.au/study-guides](https://unisa.edu.au/study-guides)

## Double degrees

Double degrees are a great option if you're interested in two different fields of study. We offer popular combinations like Law and Journalism, Psychology and Human Resource Management, Exercise and Sport Science with Nutrition, and Accounting and Finance.

We also offer a range of packaged programs where you can pair select degrees with a postgraduate qualification in secondary education to become a high school teacher in areas like Physical Education, Visual Arts, Mathematics, Science, and more.

## Fast-track to Masters

Graduate with two qualifications through our Fast-track to Masters program. Apply through SATAC for this packaged option across select business, engineering, IT and creative degrees. You'll guarantee your future place in a master's program and finish both degrees in just one extra year of study.

[unisa.edu.au/fast-track-to-masters](https://unisa.edu.au/fast-track-to-masters)

## Study 100% online

Most UniSA degrees have flexible learning options to help you balance your studies. We also have 100% online degrees delivered by UniSA Online, giving you the ultimate flexibility.

[unisaonline.edu.au](https://unisaonline.edu.au)

## ALTERNATIVE PATHWAYS

If you need alternative entry into university, we've got your back. We offer a range of pathway programs through UniSA College, along with access through the STAT, VET qualifications, OUA and SAIBT.

[unisa.edu.au/pathways](https://unisa.edu.au/pathways)

## STUDENT SUPPORT

UniSA students enjoy a range of services, including study support, counselling, access and inclusion, health education, community health clinics, free legal advice, and more.

Wurringka Student Services is a supportive space for Aboriginal and Torres Strait Islander students at UniSA. With locations on campus and online, our Aboriginal Student Engagement Officers can assist you at every step of your student journey—from preparation to enrolment and beyond.

[unisa.edu.au/studentervices](https://unisa.edu.au/studentervices)

## CAREER SERVICES

Get career ready. You can connect with our Career Services team for personalised support and advice on mapping out your future career path. Access our online Career Hub for exclusive job listings, tips on resume writing and to practise your interview skills using simulation software! You can also engage with a career adviser, attend industry events and walk in to one of our drop-in centres on campus.

[unisa.edu.au/careers](https://unisa.edu.au/careers)

## BECOME A FUTURE LEADER

UniSA students are future change-makers; tomorrow's leaders. You can shape your own personal and professional journey with our unique leadership and self-development programs. By participating in the UniSA+ Award or ASPIRE Award, you'll develop the practical skills needed for the modern workplace, including leadership, entrepreneurship, cultural understanding, effective communication, self-awareness, and much more. Become the best version of yourself and stand out as an exceptional graduate.

[unisa.edu.au/studentleadership](https://unisa.edu.au/studentleadership)



**UniSA  
ACCELERATE**

You can kickstart your university studies early through the UniSA ACCELERATE program. Study up to two courses, fully funded by a UniSA scholarship through UniSA Online while you're in Year 12. You can also choose to count this study towards your SACE Stage 2.

[unisa.edu.au/accelerate](https://unisa.edu.au/accelerate)



**UNIQUE  
DEGREES**

Did you know that we offer degrees unique just to UniSA in areas like Journalism, Interior Architecture, Counselling, Pharmacy, Podiatry, Aviation and Product Design? We also have the broadest range of business subjects in South Australia and were the first in allied health education in the state with some of the most highly accredited degrees.

[unisa.edu.au/study](https://unisa.edu.au/study)



**WHAT'S  
NEW?**

Keep up to date with the latest degrees on offer.

[unisa.edu.au/new](https://unisa.edu.au/new)



**SCHOLARSHIPS**

Every year, more than 2,500 students benefit from our scholarships and grants. Additionally, Aboriginal and Torres Strait Islander students can unlock a range of tailored opportunities such as the Gavin Wanganeen Scholarship and the Aboriginal Pathways Grant. Discover what you might be eligible for.

[unisa.edu.au/scholarships](https://unisa.edu.au/scholarships)



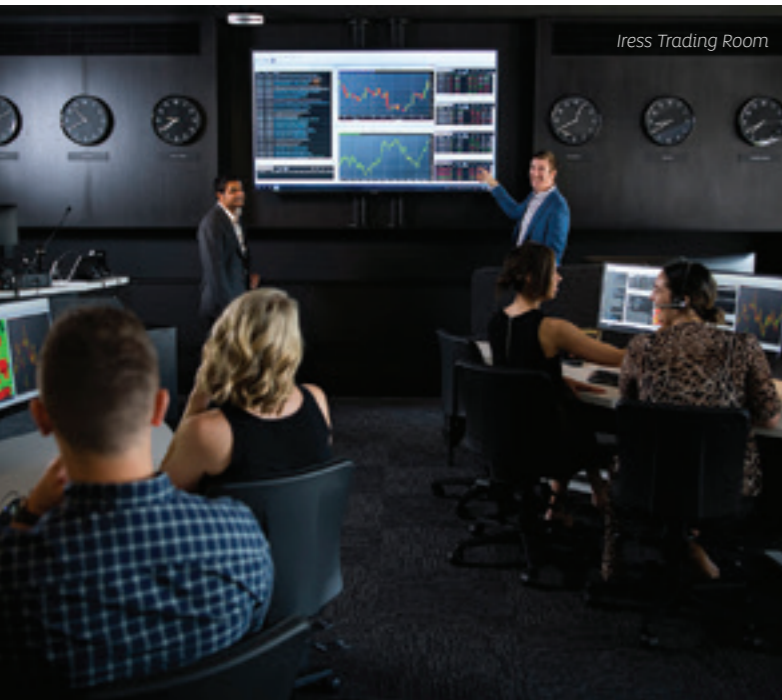
## WHAT ARE THE POSSIBILITIES FOR YOUR FUTURE CAREER?

Complete a MyCareerMatch Profile [unisa.edu.au/mycareerprofile](https://unisa.edu.au/mycareerprofile)

# YOUR CAMPUS



**TAKE A VIRTUAL CAMPUS TOUR**  
[unisa.edu.au/virtualcampustours](https://unisa.edu.au/virtualcampustours)



Iress Trading Room



Horizon Hospital and Health Service



TV Studio



Mechanical Engineering Workshop

## City West

### What you'll study

- Accounting
- Architecture, Art & Design
- Business
- Creative Industries
- Finance
- Law
- Management & Human Resource Management
- Marketing
- Pharmacy and Pharmaceutical Science
- Property & Real Estate
- Tourism, Event & Hospitality Management
- UniSA College Foundation Studies, Undergraduate Certificates & Diplomas
- UniSA College Aboriginal Pathway

### Campus facilities

Iress Trading Room · Legal Advice Clinic · Moot Court · Marketing Clinic · Architecture Studios and Workshop · Contemporary Art and Design Studios · Photography Darkroom · Business Student Hub · Tax Clinic · Jeffrey Smart Building · Student Lounge · SASA Gallery · Architecture Museum · Samstag Museum · Pridham Hall/ Yangkadhitya Wardli · Gym and Pool · UniSA Health and Medical Clinic · Pharmacy Practice Integrated Learning Suite · Museum of Discovery (MOD) · UniSA College · Post Office · Food Vendors

## City East

### What you'll study

- Biomedical Science
- Construction Management
- Exercise & Sport Science
- Human Movement & Clinical Exercise Physiology
- Laboratory Medicine
- Medical Radiation Science
- Nursing & Midwifery
- Nutrition & Food Sciences
- Physiotherapy & Occupational Therapy
- Podiatry
- Public Health
- Speech Pathology

### Campus facilities

Simulated Hospital · Anatomy Labs · Biomechanics Lab · Exercise Physiology Lab · X-Ray Suites · Biology Lab · Microbiology Lab · Sensory Lab · Histopathology and Haematology Lab · Virtual Environment Radiation Training Suite · Commercial Kitchen · Environmental Chamber · Community Health Clinics · Built Environment Experiential Learning Suite · Gym · Food Vendors · Student Lounge

## Magill

### What you'll study

- Arts
- Ageing & Disability
- Communication & Media
- Education (Early Childhood & Primary)
- Film & Television
- Journalism
- Human Services
- Psychology
- Social Work

### Campus facilities

TV Studio · Sound Studio · Radio Studio · Journalism Newsroom · Editing Suites · Theatre · Language Lab · Social Work and Human Services Studio · Cognitive and Systems Neuroscience Research Hub · Sleep and Chronobiology Lab · Psychology Clinic · Samsung SMARTSchool · Allied Health Clinic · Gym and Indoor Sports Centre · Outdoor Sports Field · Food Vendors · Parklands

## Mawson Lakes

### What you'll study

- Aviation
- Cybersecurity
- Education (Early Childhood, Primary & Secondary)
- Engineering (Civil, Electrical, Mechanical & Mechatronic)
- Information Technology
- Science & Environmental Science
- Software Engineering & Games Design

### Campus facilities

Engineering Labs · Specialist IT Labs and Studios · IVE: Australian Research Centre for Interactive and Virtual Environments · Project LIVE Studio · Future Industries Institute · Planetarium · Flight and Airport Simulators · Industry 4.0 Testlab · Defence Research Lab · Satellite Dish · Food Vendors · Gym and Sports Centre · Community Garden



## #1 IN SA FOR STUDENT SATISFACTION

ComparED (QILT) Course Experience Questionnaire 2021-22 – Overall Satisfaction Indicator (Domestic Undergraduate), SA public universities.



Mount Gambier Learning Centre



Whyalla Education Studio

## Mount Gambier

### What you'll study

- Ageing & Disability
- Business
- Education (Early Childhood, Primary & Secondary)
- Human Services
- Midwifery
- Nursing
- Social Work
- UniSA College Foundation Studies, Undergraduate Certificates & Diplomas
- UniSA College Aboriginal Pathway

### Campus facilities

- Learning Centre
- Simulated Hospital Environments
- Social Work Studio
- Green Screen Recording Studio
- Computer Pools
- Social and Study Spaces
- Yarning Circle/Nyina Ba Kalawa
- Gallery

## Virtual campus

We're one of Australia's largest online education providers, giving our students more choice when it comes to flexible learning. You can study fully online or through a blended mode. Our virtual campus is supported by custom online learning platforms using the latest industry software.

UniSA Online Learning Platform



Student Portal

## Whyalla

### What you'll study

- Ageing & Disability
- Education (Early Childhood, Primary & Secondary)
- Human Services
- Midwifery
- Nursing
- Occupational Therapy
- Physiotherapy
- Social Work
- UniSA College Foundation Studies, Undergraduate Certificates & Diplomas
- UniSA College Aboriginal Pathway

### Campus facilities

- Health Laboratories
- Simulated Teaching Classrooms
- Social Work Studio
- Green Screen Recording Studio
- Simulated Hospital Environments
- Allied Health Clinic
- Technology Suite
- Computer Pools
- Social and Study Spaces
- On-site Student Accommodation

# MEET SOME OF THE UNSTOPPABLES

Hear more from our unstoppable people



## SPOTIFY-ING TALENT

A pop culture guru and tastemaker of new trends, Boon Ken Wong is part of Spotify's International Music Team, responsible for leading artist and editorial strategy and multi-market collaboration in the APAC region.

This UniSA grad and *UNSTOPPABLE* force is working across South East Asia, South Korea, Greater China, Japan, India, Australia and New Zealand, introducing the world to the best new music and well-loved classics for the global streaming giant.



## NASA SUPERSTAR

Have you ever dreamt of working with NASA? Well, UniSA psychology grad and expert sleep researcher, Dr Cassie Hilditch, has made that her reality – investigating ways to improve sleep, alertness and performance in flight.

Based in California, this *UNSTOPPABLE* force now walks the same campus as past and future astronauts as they prepare for their missions to the moon.



## LEGO MASTER

Vietnam is set to become home to LEGO's first ever carbon neutral factory and UniSA engineering grad, Thi Quang Linh Tran, is one of the company's driving forces behind building a more sustainable future.

This *UNSTOPPABLE* force and woman in STEM is bringing her technical expertise and passion for environmental ethics to the project as a sustainable construction manager, with the Vietnamese Government championing the expansion of renewable energy production infrastructure across the country.



# OPEN DAY

**City West and City East  
Sunday 11 August 2024**

- Mount Gambier Campus 4 August 2024
- Mawson Lakes Campus 25 August 2024
- Whyalla Campus 25 August 2024
- Magill Campus 28 August 2024

[unisa.edu.au/openday](https://unisa.edu.au/openday)













# University of South Australia

*Australia's University of Enterprise*

## We're here to help

P: (08) 8302 2376

E: [unisa.edu.au/enquire](mailto:unisa.edu.au/enquire)

🌐 [unisa.edu.au/study](https://unisa.edu.au/study)



The information provided in this publication is for general information only, and the University of South Australia makes no representation about the content, suitability, accuracy or completeness of this information for any purpose. It is provided "as is" without express or implied warranty.

Information correct at time of publishing (March 2024)

CRICOS provider number 00121B / Australian University provider number PRV12107