



UNIVERSITY OF
LIVERPOOL

START YOUR ORIGIN STORY

UNDERGRADUATE
PROSPECTUS 2024

We are the original redbrick
liverpool.ac.uk

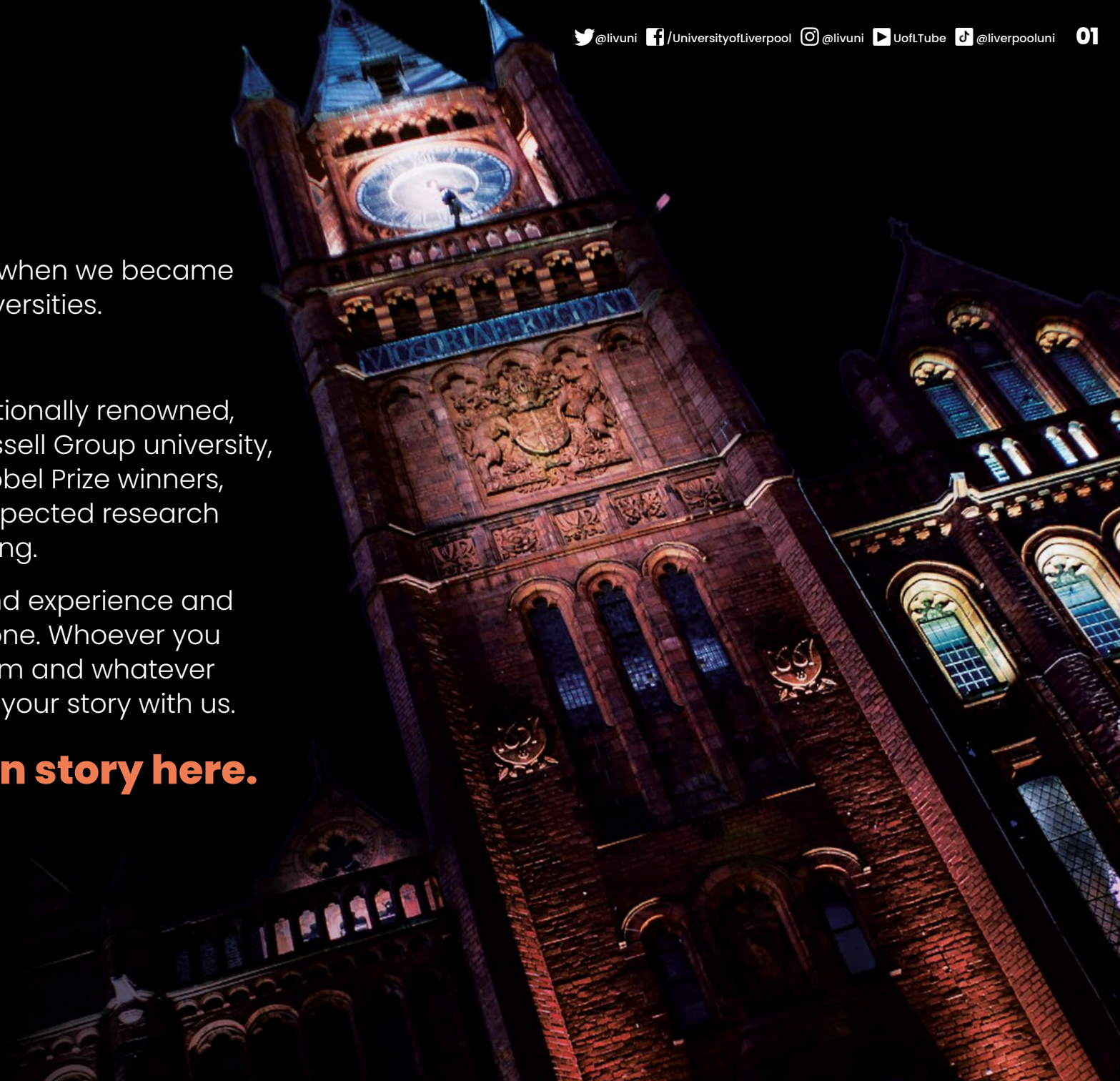
Our story began in 1881 when we became one of the first civic universities.

The original redbrick.

Today, we're an internationally renowned, globally-connected Russell Group university, associated with nine Nobel Prize winners, and home to highly-respected research and lively, original thinking.

We offer a one-of-a-kind experience and opportunities for everyone. Whoever you are, wherever you're from and whatever you aspire to be – start your story with us.

Start your origin story here.



WELCOME TO OUR UNDERGRADUATE PROSPECTUS FOR 2024 ENTRY



Get to know us:

Go online liverpool.ac.uk

Sign up for updates and event notifications:

liverpool.ac.uk/openday

Explore our virtual tour at:

liverpool.ac.uk/virtual-tour

Deep dive into our subject pages:

liverpool.ac.uk/study/subjects

Chat with our students:

liverpool.ac.uk/study/chat

Information for parents and supporters:

liverpool.ac.uk/undergraduate/parents

Connect with:

#TeamLivUni on social

 @livuni

 /UniversityofLiverpool

 @livuni

 UofLTube

 @liverpooluni

Open Days

For information about our open days and ways to visit us, see pages 80–81.



CONTENTS

Why Liverpool? **04**

A PLACE TO BELONG



Accessible to everyone **08**

A global university **09**

Your support network **12**

Mental health and wellbeing **14**

Plan your finances **16**

Managing the cost of living **17**

Get the most out of your studies **18**

Accommodation **20**

THE FUTURE STARTS HERE



Careers and Employability **26**

Meet our graduates **28**

A TIME FOR OPPORTUNITY



Global Opportunities **32**

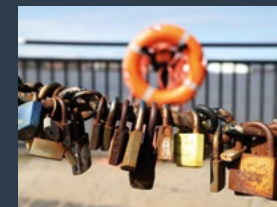
Liverpool Guild of Students **34**

Sport Liverpool **38**

Languages at Liverpool **40**

Music on campus **42**

A ONE-OF-A-KIND KIND OF PLACE



Liverpool: The student edit **46**

A PIONEERING SPIRIT



Original thinking, real world impact **60**

UNDERGRADUATE PROGRAMMES



Full programme list **64**



Your application **78**

Connect with us **80**



Index **82**

WHY LIVERPOOL?

Original and inclusive for 140 years, we're a truly inspirational place to learn and research. We're also a place where students develop a rich world view, as well as the skills and confidence to thrive in today's connected world



An investment in your future

Our focus on your future success is embedded in everything we do - from the curriculum you study, to supporting our student entrepreneurs, to innovative use of peer-to-peer support through our pioneering Career Studio. We also offer a wide range of year-in-industry options on many of our courses, ensuring you graduate ready for what comes next.

A warm welcome

We believe that education changes lives. And we're proud of our amazing reputation for welcoming students from all walks of life and supporting them on their way to bright futures. Our welcome isn't just in our contextual offers and extensive financial support packages, it's in the unique friendliness of our campus and city and the networks we have in place to ensure you succeed both academically and personally.

An exceptional student experience

We offer award-winning accommodation for you to feel at home in. With fantastic music and sports facilities and our lively Guild of Students (home to over 200 societies) right here on campus, Liverpool offers a full student experience right on your doorstep. Our students also benefit from an incredible range of global opportunities with partner institutions around the world.

And all this is set in the heart of a buzzing and vibrant student city. Voted the fourth friendliest city in the world by Rough Guides, Liverpool is a wonderfully welcoming place. It's home to nearly 500,000 people and one unique spirit. Liverpool's influence shapes the world - in art, music, sport and culture. The city's entrepreneurial and creative spirit is fuelling a boom in start-ups, but Liverpool also attracts many global businesses to make the city their home.



Making a difference in our world today

Our pioneering spirit is alive and well. We're tackling the big issues facing the world, now and in the future, with 91% of our research recognised as world leading or internationally excellent and globally recognised research in many areas, from climate change to personal health. And we are making a difference in other ways too. Right now, we're supporting our partner university in Ukraine, Sumy State University, providing a wide range of practical assistance, from marketing to access to learning materials, to help enable them to continue their work during the conflict.

Our students and staff are encouraged to think freely and explore the ideas that really get them excited. Our research and teaching take each other forward every day. And whether it's a world-changing idea or one student's personal first, we celebrate and support progress of every kind.

This may be the first warm welcome you'll get from Liverpool, but hopefully there'll be many more to come.



The Original Redbrick...
liverpool.ac.uk/study/why-liverpool

A PLACE TO BELONG

We're as diverse as the city we're part of, with a vibrant student community drawn from across the country and around the world.

THE ORIGINAL

REDBRICK

ACCESSIBLE TO EVERYONE

On and off campus, you'll meet people and ideas of every kind. It makes learning here a uniquely rich experience. And it shows that, when it comes to our civic roots, we're as open and accessible as we've always been.

We're committed to being a place where people from all walks of life can learn. For some students, going to university – and maybe even a redbrick university – may have always seemed an obvious next step. But for many of our students that's not the case. There is no "one-size-fits-all" type of University of Liverpool student. We're proud to support our students to start their journey with us, through a range of innovative support and guidance, and we're equally proud of our record in helping our students to succeed while they are here – and to go on to great things

Contextual admissions

Our contextual admissions strategy means that some groups who have experienced barriers to their education may be made an offer which is different from our standard offer. See page 79 for more information.

Foundation programmes and alternative routes

We offer a wide range of Foundation programmes and alternative routes for students coming to us from different backgrounds. See the programme section of this prospectus, pages 64–75, and the Applying section, pages 78–79 for more information.



"The widening participation team helped me become more confident in myself and truly believe that university was a choice for me. If I could give advice to a student thinking about going to university, I would definitely tell them to go for it. University is not just about getting a degree, it's about meeting people from all walks of life and making lifelong friends."

Katie Wing

Chemistry with Research MChem and former "Liverpool Scholars" student

liverpool.ac.uk/widening-participation/post-sixteen/scholars/

A GLOBAL UNIVERSITY

We're a cultural melting pot, welcoming over 7,000 international students from across the globe to our community. Our mix of nationalities enriches us. We learn from each other, create lifelong friendships and develop new ways of seeing the world.

We support our international students from the very start of their journey before they apply, through to arrival and throughout their time at Liverpool. When our students graduate, they become valued and active members of our alumni community around the world. Find information on:

- Applying to the university as an international student (including entry requirements and fees and scholarships) liverpool.ac.uk/study/international
- Support services for international students (including guidance on visas) liverpool.ac.uk/studentsupport/visas-and-immigration/
- Pre-sessional and in-sessional English language courses with our English Language Centre liverpool.ac.uk/english-language-centre
- Foundation programmes for international students kic.org.uk/liverpool



"Besides the academic part of the University of Liverpool, I find that the student experience at this university is truly one-of-a-kind. Liverpool is such a student-friendly city, and this University offers many great opportunities for students such as studying abroad, language classes and societies."

Lamya Al Saqqaf
Law with Politics LLB

ORIGIN *Stories*

**FOSTERED. FIGHTER.
RESILIENT. HIGH-ACHIEVER.
AMY – PSYCHOLOGY PHD STUDENT**

"I grew up in foster care. It was a very difficult time. I didn't go to primary school, and I was occasionally homeless. I remember being told you're not going to be able to go to university. And I remember thinking 'No, no, no! I am!'

I didn't do as well as I wanted to at college. But I managed to get a place at the University of Liverpool through clearing and the widening participation team helped me to get where I am today. The journey has been a bit rocky at times. People haven't always believed in me. But as soon as I came to Liverpool, I was treated as a person, not a number. And made to feel I could achieve."



Hear more of
Amy's story on
our website.



YOUR SUPPORT NETWORK

Whatever your circumstances, we have the support network in place to help you get the most out of your studies and time at university. From mental health and counselling to money advice, there is a team here dedicated to supporting you.

Advice and Guidance

Our wellbeing advisers offer a drop-in service, Monday-Friday, helping with a wide range of questions relating to your wellbeing, and signposting you to one of our specialist services if necessary.

T: +44 (0)151 795 1000

liverpool.ac.uk/studentsupport/mental-wellbeing/wellbeing-advice

Childcare

Our purpose-built Children's Centre on campus provides full-day care for nursery age children as well as playschemes during school holidays.

liverpool.ac.uk/childcare



Disability Advice and Guidance

Where you choose to disclose a disability, we will work closely with you and your department to put in place the support that works for you. Please get in touch if you wish to discuss your specific requirements or find out if you might be entitled to disability-related funding.

T: +44 (0)151 795 1000

E: disteam@liverpool.ac.uk

liverpool.ac.uk/studentsupport/disabled-students



Faith

The University is a multi-faith campus and has a number of Chaplains and Associate Chaplains: who provide pastoral and faith support to students. We have four official chaplains - Anglican, Catholic, Jewish and Muslim - but they can also help contacting other faith groups.

Student Health

Brownlow Health is a full-time general practice offering a number of GP services to students on campus. We offer a wide range of services including diabetes, sexual health, mental health, eating disorders, alcohol and drugs. Many things can be dealt with without the need for a trip to the practice, and we can now use eConsultation to make sure you see the right person, in the right place, at the right time. central.brownlowhealth.co.uk

International Advice and Guidance

We work with students, academic departments and the Guild of Students to help our international students get the most out of their studies. This includes everything from specialist immigration advice to help with personal and practical issues.

T: +44 (0)151 795 1000

E: iagteam@liverpool.ac.uk

liverpool.ac.uk/studentsupport/visas-and-immigration



I love the feeling of being secure and supported at the University of Liverpool. My School provides a multitude of support networks and systems. From personal academic advisers to careers guidance, to wellbeing and specific international student support, the University makes it so easy for students to reach out for help.

Holly Wu
Physiotherapy BSc

Safety on campus

The University is committed to providing an environment that enables our students, staff and visitors to feel safe at all times while on campus. As part of this, we have a 24/7 campus support team, extensive CCTV coverage, chaperone service and even an on-campus police officer.

Our commitment to a safe environment

We have expectations around behaviour that are covered by our student conduct policy. This covers rules relating to students conduct on and offline, and on and off university premises.

liverpool.ac.uk/student-administration/policies-procedures/conduct-discipline

Report and support

This online tool is available for all students and staff wishing to seek advice and support for any incident of bullying, harassment, sexual violence, domestic violence, hate crime or discrimination. The tool is free and users can choose to post anonymously if they wish.

MENTAL HEALTH AND WELLBEING

Being at University is an exciting phase of your life, but almost certainly will bring some challenges. Studies have shown that over one in three students will experience poor mental health at some point during their studies, so it's important that you know how best to look after your mental wellbeing – and where you can access support when you need it.

The Wellbeing Team

The Wellbeing Team provides confidential, non-judgemental one-to-one support, information, advice and guidance to students. We can talk to students about a range of personal and social issues, helping to improve their mental and physical wellbeing.

Face-to-face sessions with our advisors are available daily on campus, or by video or phone call from wherever students feel most comfortable. The team also runs a programme of courses and workshops to provide students with ideas of different ways to manage and improve their mental wellbeing. For more information, please visit liverpool.ac.uk/student-support/mental-wellbeing/wellbeing-advice/

Mental Health Advisory Service

Our services are here to support students experiencing issues with their mental health. We offer a recovery-focused approach which is underpinned by the key values of inclusion, care, collaboration and compassion.

As well as providing support to our current students, we are happy to speak to anyone considering applying to study here who may wish to find out more about our services. For more information please see our website liverpool.ac.uk/student-support/mental-wellbeing/mental-health-advisory-service

Counselling Service

Anyone, at any time, can have thoughts and emotions that may feel overwhelming. The Counselling Service helps students explore how they think, behave and feel about an issue and help them to find appropriate ways to make changes in their lives. We offer a confidential, inclusive service with qualified therapists trained in a range of evidence-based psychological therapies.

Our service provides a supportive pathway with a stepped care model; this means that students can access us quickly via the Wellbeing team and get the most effective help for their needs. liverpool.ac.uk/student-support/mental-wellbeing/counselling-service/

Our work with local services

As part of our ongoing commitment to student wellbeing, we work with the NHS and other universities in the city to improve access to mental health services for students. The Student Mental Health Partnerships project was commissioned to develop a student-focused, innovative best practice model for collaboration and liaison between university and NHS mental health services.

The project aims to:

- Introduce new clinical services based on campus, including the U-COPE self-harm service
- Work in partnership to influence and improve pathways into mental health services for students
- Work together on the design and delivery of care with students and practitioners
- Share best practice.



"The project has enabled Mersey Care and our university colleagues to collaborate and develop a successful partnership, using shared processes to ensure students can access the right support and psychological interventions, which will allow them access to a safer, improved mental health provision."

Donna Robinson

Director of Mental Health/Divisional Director of Mental Health Care, Mersey Care NHS Foundation Trust

PLAN YOUR FINANCES

There is a wide range of financial support available for students starting their studies in 2024 to help with tuition fees and living costs. To find out more, including how and when to apply, visit liverpool.ac.uk/money

Tuition fees

Fees have not yet been announced for 2024 entry, however as a guide tuition fees for 2023 are £9,250. Lower fees apply for years spent in industry, years abroad and foundation years. For more information, please see liverpool.ac.uk/money

Study costs

As well as standard tuition fees, you may have some extra study costs depending on your programme of study. For more information about these programme-specific costs, please see the relevant course pages online at liverpool.ac.uk/courses



MANAGING THE COST OF LIVING

We understand that financial challenges can be a significant cause of anxiety, affecting mental health, ability to focus on study and general wellbeing.

The cost of living in Liverpool can be lower than some other UK cities, and there are a wide range of part time job opportunities both in the university and the city that can help you balance your finances. You won't be on your own, we are here to help and support you every step of the way.

Money Advice & Guidance Team

Our Money Advice & Guidance Team is helping our students to manage the rising cost of living in a number of practical ways, whether it is with unexpected short-term costs, or with long-term financial management. The team provides confidential one-to-one appointments to students in need. More information can be found at liverpool.ac.uk/student-support/money-advice

University Hardship Fund

We may be able to offer support to students experiencing difficulties with finances through the University Hardship Fund. Due to the current economic climate, the University has recently tripled the Hardship Fund to £1.5 million from £500,000. We have also invested in additional staff resource to ensure applications to the University Hardship Fund are processed as swiftly as possible.

Earn while you learn

Job opportunities and careers support are all available via our online careers platform, Handshake. The platform can be used to help students find part-time employment to supplement their income during their studies, as well as graduate opportunities towards the end of their degrees.



GET THE MOST OUT OF YOUR STUDIES



Academic support network

Learning at university is different to school or college, and there will be a period of adjustment, but the team here is dedicated to getting you up and running quickly. Your support network is here to help you with any issues you might encounter with your studies and beyond.

- The Student Experience team in your School can help you with the administrative side of your studies, and signpost you to other services
- Your Academic Adviser is a member of academic staff in your School who can help with any concerns you may have about your studies
- Your fellow students – your peers – will be an invaluable source of support. Many schools run peer mentor schemes and there are many other ways students support each other, for example as student course reps, Career Coaches, Guild staff and AskMe helpers.
- The final piece of the network is you – you're in the driving seat so make sure you take full advantage of the team around you!

"I wanted to be a Peer Mentor so that I could give useful advice I wish I'd had when I first came to university – how to research an essay, how to cope with stress, where to get a cheap pint! I know how intimidating the change can be, and that sometimes you need a friendly face".

Carys
Politics and French BA (Hons)



THE UNIVERSITY LIBRARIES

- The two University libraries are usually open 24/7 throughout the academic year providing access to books, computers, study spaces and helpful, friendly staff
- Our library collections include the reading list items you'll need for your studies, either in print – we have over 2 million print books – or online via our extensive collections of over 900,000 eBooks and eJournals, all available 24/7. Students can also suggest additional books for the library to purchase
- The breadth of our collections enables you to research beyond your reading list, to develop your knowledge and expertise. Each subject has a dedicated Liaison Librarian, who provides specialist support and advice to help you make the most of the Library resources
- KnowHow is a Library service designed to help you develop your academic skills and excel in your studies. The KnowHow team offer online and face-to-face workshops and resources to help with essay planning, preparing for exams, referencing, managing your time when studying and more
- We also offer two popular one-to-one tutorials led by postgraduate students to help you improve your writing skills and use statistics effectively in your work
- Depending on how you prefer to study, the Library has zoned workspaces for silent, quiet and group work. To take a break from studying, you can grab a drink in the Library café or catch up with friends in the Library social areas.

liverpool.ac.uk/library

[t](https://twitter.com/LivUniLibrary) [i](https://www.instagram.com/LivUniLibrary) [f](https://www.facebook.com/LivUniLibrary) [@LivUniLibrary](https://www.linkedin.com/company/LivUniLibrary)



IT SERVICES

- 24/7 IT Service Desk – including a self-service portal – to help with any IT issue or query
- Secure file space to save your work throughout your studies
- Over 2,000 computers are available to use on campus and remotely
- High-speed Wi-Fi available for laptops, tablets and mobiles
- Hundreds of knowledge articles to help you solve an IT problem
- Free software to install on your own computer, including the latest versions of Microsoft Office and specialist software such as SPSS and Matlab
- Free mobile apps that let you access your timetables and coursework wherever you are
- Two-factor authentication to keep your information safe
- Microsoft Teams and Zoom for online learning and collaboration
- Activate your account when your place is confirmed to access University email and IT resources before you start the academic year.

liverpool.ac.uk/it

[t](https://twitter.com/LivUniIT) [i](https://www.instagram.com/LivUniIT) [f](https://www.facebook.com/LivUniIT) [@LivUniIT](https://www.linkedin.com/company/LivUniIT)

GOOD TO KNOW

It's not all about studying! Through our Library, you can access 1000s of free physical books, audiobooks, films, television programmes and more for free. Our Library team collate themed 'Leisure & Wellbeing' collections to help you relax and unwind alongside your studies.

ACCOMMODATION

University of Liverpool accommodation provides much more than just a place to sleep. It's a ready-made community where you'll make friends in a safe, supported environment. We have over 4,400 student rooms across our popular student village, city campus residences and with our city-based private providers.

Choosing your accommodation preferences

Living in halls

Living in University accommodation offers true flexibility. We provide short contract lengths so that you are only here when you need to be, don't require a deposit or guarantor, and if your plans change before you arrive, we will release you from your agreement. We have an incredible support team of Wardens and Residential Advisers in the halls to support you, as well as a fantastic offering of events and activities from our Halls Life Team. Students love living with us.



Prefer to stay in your family home?

If you choose to stay at home or with family, you will not have to miss out on student life. There are lots of ways you can get involved in campus life, whether that be attending our dedicated local student welcome event or getting involved in a range of opportunities to make connections such as playing sport, joining societies, joining ambassador programmes and getting involved with your department... there is something for everyone!

For the latest accommodation fees see liverpool.ac.uk/accommodation



Greenbank Student Village/ City campus?

Greenbank Student Village is a stunning, modern, fully en-suite property set within beautiful parkland in the leafy area of Mossley Hill. It is situated about three miles away from the city campus and offers the best of both worlds: close to the hustle and bustle of the city centre and a peaceful, relaxing setting for you to live.

Greenbank students have access to an onsite gym, 3G football and basketball pitches, as well as three stunning parks all in walking distance. You are connected to campus by the subsidised 699 bus, or alternatively you can use the cycle route through two parks to make your own way to campus.

Our city campus residences (Vine Court, Crown Place, Melville Grove and Philharmonic Court) are within easy walking distance of all academic departments as well as the Sports Centre, Guild of Students and city centre. With the option of self catered, en-suite and shared bathroom accommodation; there is something to suit all your needs on campus.

In addition to our halls on campus, we also have rooms available with both Kaplan and Student Roost. These properties are all within a 5 minute walk to campus, boast ensuite rooms and are another great affordable option.



Watch our student life videos at youtube.com/UofLTube



GOOD TO KNOW



Accommodation guarantee

We offer guaranteed University of Liverpool accommodation in either our own halls or preferred providers to all students who make us their first choice (firm) university and apply for accommodation by 31 July 2024.



Accommodation discount

All students who are eligible for our Liverpool Bursary (see liverpool.ac.uk/money) will receive a 15% discount from their accommodation fees if living in UoL halls.



Applying for accommodation

You are able to apply for accommodation as soon as you have received your offer to study. You do not need to choose us as your firm choice before applying. We recommend that you apply as soon as possible, as rooms are offered on a first come, first served basis. There is no deposit required to book accommodation.



VINE COURT SE

Students at residence: **750**
Students per flat: **2-16**
Weekly Rent (2023-24): **£178 - £206**



CROWN PLACE SE

Students at residence: **1,257**
Students per flat: **3-8**
Weekly Rent (2023-24): **£162 - £207**



MELVILLE GROVE S

Students at residence: **338**
Students per flat: **6-9**
Weekly Rent (2023-24): **£150 - £158**



PHILHARMONIC COURT SE

Students at residence: **354**
Students per flat: **4-6**
Weekly Rent (2023-24): **£186 - £231**

**TAKE A
TOUR OF OUR
ACCOMMODATION**

[liverpool.ac.uk/
virtual-tour](http://liverpool.ac.uk/virtual-tour)

All accommodation
includes high speed Wifi.

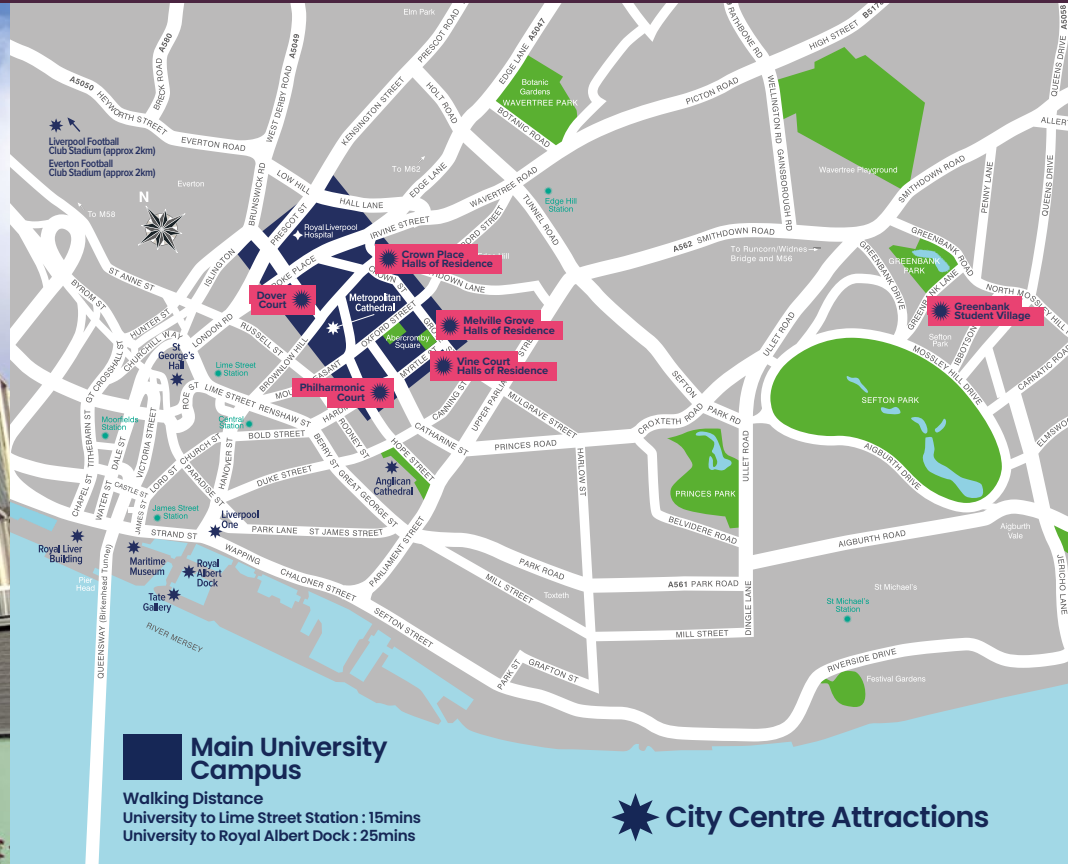


GREENBANK STUDENT VILLAGE SE

Students at residence: **1,350**
Students per flat: **4-9**
Weekly Rent (2023-24): **£186 - £206**

Accommodation Key

- S** Self-catered shared bathroom
- SB** Self-catered en-suite



Main University Campus

Walking Distance
University to Lime Street Station : 15mins
University to Royal Albert Dock : 25mins

City Centre Attractions



T: +44 (0)151 795 0319 E: accommodation@liverpool.ac.uk
liverpool.ac.uk/accommodation

THE FUTURE STARTS HERE

You're at the beginning of a journey.
Be bold. Be brave. And be open.
A world of opportunity awaits.

THE ORIGINAL
REDBRICK

CAREERS & EMPLOYABILITY

Employability is embedded throughout your student journey, both in the curriculum you study, and in the extra-curricular activities and events open to you. Liverpool is also home the UK's first Career Studio; a welcoming campus space where student Career Coaches help you explore your options and take the next step.

The Career Studio. It is a space led by students, for students, empowered by career experts. Whether you are set on a particular career or don't know where to start, our Career Coaches will support you. The Career Studio is led by a team of 20 trained Career Coaches and has three zones: **Explore**; **Experience**; **Apply**.

Explore

If you don't know what you want to do, or are not sure where to start, we will help you develop a career plan. We'll look at your skills and experience and how they relate to your ambitions. As part of your experience you will research different sectors and roles, learn about studying and working abroad, and discover what employers are looking for in graduate recruits. You will also find out about the latest work experience opportunities, placements, internship and graduate schemes.

Experience

Meet leading employers at career events and experience the world of work through our programmes. Unique Liverpool Internships help you get the competitive edge and for our entrepreneurial students we provide opportunities to design your own future, including a 10-week programme with industry experts. Our work-ready experiences are open to all students, no matter what year or discipline.

Apply

Focused support to help prepare and perfect your applications for the many opportunities that come your way. Take advantage of support with CVs and applications, practise online tests, face-to-face and video interviews, and prepare for a full-on assessment centre experience.



Watch our video to find out more about how the employability experience at Liverpool is like no other.

The Liverpool experience

Employability activity is embedded into most of our programmes and many offer the chance to spend a year on a work placement.

We also help you get the skills employers want through co-curricular and extra-curricular activities, local and global enterprise challenges, and employability enhancing in-curricular experiences.

liverpool.ac.uk/careers/students



"Employability is deeply rooted in what we do. It's in your courses and modules; it's built into your student journey; and it's all over campus too. We make sure every student has the opportunity to experience new things and develop the employability skills they need. We're here to make sure you are equipped for a future full of success".

Iwan Williams
Director of Careers & Employability



MEET OUR GRADUATES

Did you know that there are more than 258,000 Liverpool alumni across the world? In 189 countries to be exact! And while it may seem like a long way off until you graduate, you don't need to wait until then to take advantage of our alumni community. Here are just a few ways you can get involved.

Events

We host a wide variety of events on campus; around the country and overseas and online.

Networks

The University of Liverpool is ready to help you feel completely at home from day one. As well as student societies, you will have access to our global network of alumni associations and special interest groups. This is especially useful if you relocate as you will have access to a ready-made network.

Liverpool Connect

Liverpool Connect is the University of Liverpool's online e-networking platform, connecting students with our global alumni community for advice and support.

On Liverpool Connect, students can:

- Search a global directory of alumni professionals
- Make e-networking connections for informal mentoring and career insights
- Access employability enhancing digital tools and free online events
- Learn new skills and job search techniques
- Continue to enhance your employability online.

As a student, you can connect with over 5,000 alumni who are already using Liverpool Connect and waiting to hear from you!



The Honorable Wendy Beetlestone

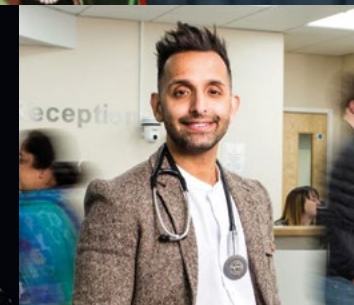
Newly-appointed Chancellor of the University of Liverpool and judge in the United States District Court. Nominated to the bench by President Barack Obama (BA Hons Philosophy 1984, Hon LLD 2019).

Wendy is the University's 11th Chancellor – and is both the first female and first black person to hold this title.



Dr Jaclyn Bell

Theoretical particle physicist, athlete and aspiring astronaut (BSc Hons Mathematics 2010, MA Mathematical Sciences 2011, PhD 2016)



Dr Amir Khan

Full-time GP, TV doctor and bestselling author (MBChB 2004)



Victoria Derbyshire

BAFTA award-winning journalist and broadcaster (English Language and Literature 1989)

Follow in the footsteps of:



...the first female
Director-General
of MI5



...9 Nobel prize
winners



...the first female
Judge to sit at the
Old Bailey



...the Poet Laureate
from 2009–2019



...the first
Chief Executive
of Hong Kong



...a former
President of
Singapore



...the BBC's Global
Health Reporter.

A TIME FOR OPPORTUNITY

Don't settle for the humdrum, the ordinary.
You'll never have a better time to try
something new, so go out there and do it!



THE ORIGINAL
REDBRICK

GLOBAL OPPORTUNITIES

One of the most valuable experiences you can take advantage of while at university is the opportunity to study abroad, and at Liverpool, we provide a fantastic range of Global Opportunities, enabling you to experience new cultures, graduate with an excellent degree and boost your employability.

A Global Opportunity gives you the chance to spend either a semester, a year or some of your summer vacation abroad. We have lots of amazing partner universities and exciting programmes to choose from.

So, where will your degree take you?

Depending on your degree subject you may be able to participate in these programmes:

Year Abroad

Students studying the majority of our programmes are able to apply for the exciting opportunity to add an extra year onto their programme, spending one academic year at one of our partner universities around the world studying local history, culture and language, as well as subject-related modules.

Semester Abroad

Spend a semester at one of our amazing partner universities around the world, usually during your second year, studying modules from your subject area.

Study in Europe, Australasia, North America or Asia! This option does not add any extra time to your degree and is credit bearing (ie it counts towards your Liverpool degree).

Summer Abroad

Do something different with your summer holiday and take a few weeks to study, work, or volunteer abroad. We have opportunities in Asia, North America, Australasia and Europe.

Clinical rotations

Students in Veterinary Medicine have the chance to take some of their clinical rotations and placements at some of our partner universities abroad in Europe.

Year in China

Add an extra year onto your degree programme and study at our partner University, Xi'an Jiaotong Liverpool University (XJTLU). On this unique opportunity, you will discover Chinese culture, history and politics and learn the Chinese language.



GOOD TO KNOW



You don't need to speak the host country's language to take part



You are still eligible for Student Finance funding



Grants and scholarships may be available



You'll be supported by Liverpool and your host university while you're away

Study Abroad programme	How long does it last?	Does it add time to your degree?	Is it credit bearing?
Semester Abroad	1 semester (4-6 months)	No	Yes
Year Abroad	1 academic year	Yes	Yes
Summer Abroad	2-8 weeks	No	No
Clinical rotation	3 months	No	Yes
Year in China	1 academic year	Yes	Yes

LIVERPOOL GUILD OF STUDENTS

Liverpool
Guild of
Students

We're Liverpool Guild of Students, the Students' Union for University of Liverpool students.

We keep students at the heart of everything we do, opening the door to all of the opportunities outside of their studies and enriching their University experience.

To make sure we achieve this, we promise to:

- 1 Support all of our members
- 2 Put students at the heart of decision making
- 3 Ensure all members benefit from the Guild
- 4 Invest in our spaces

We're proud to offer something for everyone. From activities to advice and campaigning to volunteering, it's all here at your fingertips for you to get involved in and enrich your university experience.

Lead the Guild: Student Officers

We are led by four student officers, elected each year by a campus-wide vote, who shape our policy and direction and make sure we continue to fight for the things that matter to students. If you're looking to create change on campus and want to make the University an even better place for students, you can run to become a student officer yourself – it's a job opportunity like no other.

Home away from home

Sitting at the heart of campus, our building is where everything takes place. Find the cheapest meal deal on campus at our Guild Shop, chill out in the Courtyard and watch live sports, treat yourself to a post-lecture drink at the Sphinx, or heat up your lunch and make the perfect brew at our free hot water and microwave station in the building. With a place for everyone, there's nowhere better on campus.

A Guild for everyone

We are a building of opportunities for everyone and offer a huge range of activities to get involved in outside of your studies. With 200 societies from Dance to Debate and Baking to Ballroom, a wide range of volunteering opportunities and an amazing array of sustainability projects, there's plenty of things to get stuck into. And the Mountford Hall is one of the biggest venues in the city for live music, with everyone from KSI, to Slowthai, the Wombats to the Happy Mondays, playing on your doorstep.

Fight for the things that matter

We want the student experience to be the best it can be and make sure our members see the change they need on campus. We have a whole host of ways you can get involved – from taking part in campaigns to becoming a Course Rep – so we make sure you have opportunities to have your say. In recent years, we've seen the University divest from fossil fuels and cut the cost of student rent thanks to committed student-led campaigning.

Here to help

Coming to University is exciting but we know that it can be a big change and there might be times where you need a little bit of extra help and support. Our Advice team are a confidential and independent advice service that support students with a range of wellbeing, academic and housing issues, no problem is too big or too small.

GET TO KNOW
US BETTER:

liverpoolguild.org

[/liverpoolguild](#)

[@liverpoolguild](#)

[@liverpoolguild](#)

[@liverpoolguild](#)



ORIGIN *Stories*

PASSIONATE. OPEN-MINDED. RISK-TAKER.
**RIO – BUSINESS MANAGEMENT WITH A
YEAR IN INDUSTRY BA (HONS) STUDENT.**

"I come from a footballing background. From the age of 13 – 16, I was signed to Everton academy, before moving to Nottingham Forest. But I wasn't happy there. I felt homesick, a bit lonely and I realised that I could look for passions outside football.

I decided to leave and go to college to do my A levels. I did quite well. But I didn't know what I wanted to study at university. Whether my strengths would lie in business management or something more sport related. I chose to challenge myself and try something new. And that's why I'm here now. I'm finding my path in life and studying to build a successful future."



SPORT LIVERPOOL

Whatever your level of sport, there's something at Liverpool for you. As we set out plans to be the UK's most active campus by 2026, we aim to engage every single student through healthy, enjoyable activity as well as supporting our sports teams and elite athletes to be the very best they can be.

OUR FOCUS

Health & Wellbeing

Improving health and enriching the lives of our student population by increasing levels of participation in physical activity and sport

Student Success

Supporting our students to excel in sport and in life through opportunities to train, compete, learn, lead and communicate.

Building Community

Building a stronger campus community by organising events and activities that bring people together to enjoy shared experiences, develop friendships, build social trust and a sense of pride in belonging to the University.



Excellent facilities

We have some of the best facilities and services university life can offer, with flexible, competitive membership options and pay as you go access.

Sport and Fitness Centre

Our on-campus Sport and Fitness Centre offers a 25 metre swimming pool; sports halls; squash courts; dance and spinning studios; bouldering wall; gym and weight training area alongside personal training sessions to help you achieve your fitness and wellbeing goals.

Take part in organised group exercise classes including Spinning, Pilates, HIIT and Les Mills BodyPump, BodyBalance and GRIT classes. Available to suit all levels of ability, our classes provide individuals and groups with the opportunity to participate in a range of recreational exercise, dance and sporting activities.

Active campus

Getting active is a lifestyle at Liverpool and there's plenty of stuff to do for free on campus too, with a running track, a container gym, and a half basketball court.

Wyncote Sports Ground

Wyncote, approximately 3 miles from campus, is home to football and rugby pitches; lacrosse pitches; floodlit hockey astro, football 3G pitch and 3G rugby training area.

Greenbank Student Village

We also have a state-of-the-art gym, dance studio, small 3G pitches and an outdoor tennis and netball court at Greenbank Student Village.

Get involved

Sport should be fun, whether you are taking part or spectating. As well as offering you the chance to join in and compete at all levels, our Athletic Union also means you can really get behind Team Liverpool too. There's a real community feel to our facilities and lots of opportunities to socialise and make new friends.

Sports are available at three levels:

Club Sport. Join one of our 53 student-led sport clubs, most of which represent us in the British Universities and Colleges Sport leagues (BUCS) and with the majority of clubs accepting beginners, now is your chance to try something completely new!

Campus Sport. Campus Sport gives you the opportunity to take part in sport at a recreational level. There are internal leagues in football, netball, hockey and futsal.

Turn up and play. Keep fit and enjoy the sports that you love on an informal basis.

PERFORMANCE PROGRAMME

The Performance Programme is designed to support talented student athletes who are competing at a high level within a Sport England and BUCS (British universities and colleges sport) recognised sport. The competitive scheme which is open to incoming or current University of Liverpool students provides a range of support services including physiotherapy, strength and conditioning, sport psychology and nutrition support.

E: athlete@liverpool.ac.uk
liverpool.ac.uk/sports/team-sport-liverpool

LANGUAGES AT LIVERPOOL

Why limit your learning to just your degree?
Take advantage of a world of opportunities at
the University of Liverpool and learn a new language.

Language-learning opens doors, breaks down cultural barriers and brightens your future career prospects. We put languages at the centre of our strategy as an internationally-focused institution, which aims to develop students as 'global citizens' of the future.

Every Liverpool student has the opportunity to learn a language during their time here.

Depending on your course, this can either be as part of your degree or as an extracurricular activity alongside your studies.

Whichever option you choose, you could learn French, German, Chinese (Mandarin), Italian, Spanish, Portuguese, Basque and Catalan. Open Languages also offer Arabic, Japanese and Russian as both extracurricular and part of degree options. Our courses are available at beginner, intermediate or advanced levels.

"The University allows us to
develop our individual language
ability through a variety of
module and extracurricular
activities, such as guest speakers
and language societies. The staff
really focus on bringing out the
best in their students and they
are always so supportive if we
ever need any help or advice."

Tean Birch
Modern Languages BA (Hons)



MUSIC ON CAMPUS

Whatever kind of music you're into, there is something for you on campus.

Liverpool University Music Society typically runs a choir for All Voices, an auditioned Chamber Choir, a Symphony Orchestra, Stage and Screen Orchestra, Flute Choir, Big Band and Concert Band. Each ensemble has its own performance schedule, and they are run by our very talented and very friendly ensemble leaders, professionals and fellow students. Band Soc provides a platform for student musicians to meet and form bands, and there's a wealth of societies specializing in genre-specific music from Bhangra to Shoe-gaze. Visit the Guild website for more details.

liverpoolguild.org

For gigs and live concerts you have an amazing choice of events, many of which are free. The Tung Auditorium is a new, state-of-the-art 400-seat auditorium delivering a prestigious musical programme for the City of Liverpool, and Mountford Hall is a well-known tour stop for internationally renowned bands as well as a venue for battles of the local bands.

The Tung Auditorium

Opened in spring 2022, The Tung Auditorium is a state-of-the-art concert hall for 400 people, situated within the new Yoko Ono Lennon Centre. An exciting addition to the University and the city's thriving musical scene, the Tung is a space for teaching and learning, a cultural hub for all students on campus and a public venue. It hosts a diverse programme of classical and contemporary music, performed in outstanding acoustic and architectural surroundings.

thetungauditorium.com



A "ONE- OF-A-KIND" KIND OF PLACE

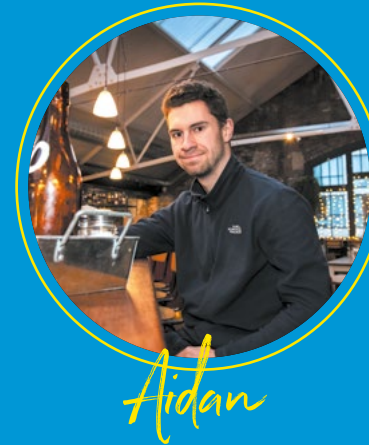
Make your life in a city of characters
and culture, that fizzes and pops
A place to belong, and always
come back to.

THE ORIGINAL

REDBRICK

LIVERPOOL: THE STUDENT EDIT

Liverpool is a city unlike any other.
Part tourist mecca, for Beatles' lovers,
football fans and culture vultures alike.
Part creative hotspot, buzzing with
independent spirit and never-has-to
try-too-hard cool, all wrapped up in
our unique warmth and humour. We
asked our students, Aidan and Anthonia
to share their Liverpool with you.



Aidan

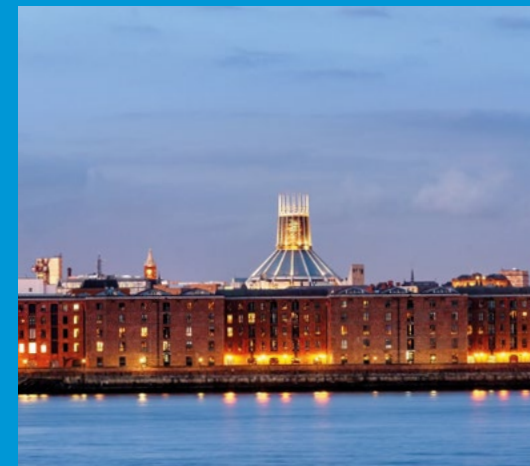
Year Three Geography student

"Tourist
treats and
hidden gems"

The ferry across
the Mersey

As immortalised in local band Gerry and the Pacemakers' 1964 hit song, the famous Mersey ferry is one of Liverpool's classic attractions. This hop-on hop-off sightseeing cruise connecting the city to **Wallasey** and **Birkenhead** on the **Wirral** provides an opportunity at seeing Liverpool at its best from a very different perspective. A boat cruise up and down the Mersey is an absolute must for a sunny day, where from the river you can take in the view of the city's stunning **waterfront**.

With so many famous landmarks in Liverpool, from here you get the opportunity to capture them all in one stunning view.





The reds & the blues

Separated by **Stanley Park** in the north of the city are the homes to the city's historic football clubs – 19 times league winners and six times European champions **Liverpool FC**, and nine times league winners **Everton FC**. **Anfield** and **Goodison Park** are two world-famous football grounds, both with upwards of 125 years of history. Football makes up such a huge part of the city's culture and identity, so paying a visit to either club should be a must for all football fans studying in the city! If you're not lucky enough to visit on a matchday, take a stadium tour round either of the stadiums.



A city alive

Liverpool is a city famous around the world for its music. So many great bands and artists come from the city, including arguably the greatest band of all time: The Beatles! Head to Mathew Street to take in some of this musical heritage. Every bar and pub hosts live music, including the world-famous **Cavern Club**. The Cavern is famously where The Beatles began to make a name for themselves and grow in popularity and has hosted many more of the biggest names in music over the years. A visit to the famous old music venue is an absolute must whilst in Liverpool! Today, the legacy left by bands like The Beatles still runs strong.



with music

Local artists across genres such as CamelPhat, The Wombats and The Coral have all recently performed in the city. For smaller, intimate live gigs, and for a chance to see new and upcoming local artists, head to **Jimmy's** on Bold Street. Mountford Hall at the Guild offers plenty of larger gigs, whilst the **M&S Bank Arena** on the waterfront hosts the biggest names in music when touring in Liverpool – it's also home to the Eurovision Song Contest 2023! For more house and dance music tailored events, look out for events such as **Circus** at **Bramley Moore Dock**, as well as **Baltic Weekender** in venues throughout the Baltic Triangle.



Fresh air and green spaces

There are plenty of open spaces and beautiful scenery in and around the city to visit. **Crosby Beach** further north is an excellent place to come for fresh air on a sunny day to take a break from the busy city. The 4-kilometre stretch is home to Anthony Gormley's '**Another Place**', a collection of 100 iron men across the beach. A little further up the Northern Line, **Formby** is home to a stunning stretch of beach and sand dunes, as well as the pinewoods, where you may find rare native red squirrels. Liverpool has a multitude of stunning parks and green spaces across the city. For me, **Sefton Park** is the highlight, a 235-acre park not far from the city centre and the student areas around Smithdown Road and Greenbank.



Hope you found my Liverpool helpful!
Aidan



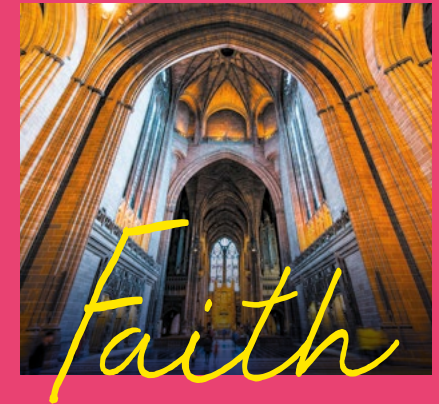
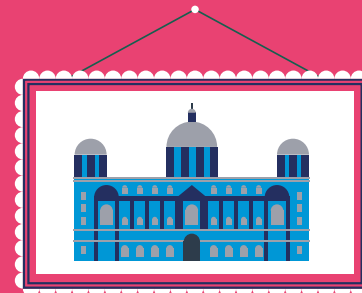
"Fall in love with Liverpool's amazing culture and colourful independent scene".



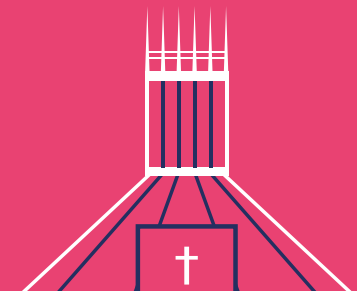
Liverpool by *Anthonia*
Year Four Medicine student



- Liverpool has the most museums and galleries of any city in the UK outside London, and there's a museum for just about anyone to enjoy (and the majority of them are free)!
- If you want to learn more about Liverpool's involvement in the slave trade, the **Liverpool International Slavery Museum** is the place to visit; prepare to be immersed in this important period in history
- **The Museum of Liverpool at Pier Head** is the perfect place to learn all about the rich history of our beautiful city. It's an eclectic mix of everything, from Scouse fashion sense to pop music, prehistoric Liverpool to the city's heyday as a port
- If art is more your scene, don't fear! Liverpool is home to several art galleries, such as the **Tate Liverpool** on the **Albert Dock** to the **Open Eye Gallery** on **Mann Island**.



- Faith is a big part of my life and Liverpool definitely knows how to cater to this!
- Liverpool is the only city in the UK with two major cathedrals connected by one street (**Hope Street**) which Pope John Paul II visited in 1982!
- **The Metropolitan Cathedral** is located at end of **Hope Street** (right next to Central Campus!) and boasts beautiful stain glass pieces both inside and outside the cathedral
- At the other end of **Hope Street** sits the **Anglican Cathedral** which exterior is almost as majestic as the interior is beautiful – definitely worth a visit!
- The **Abdullah Quilliam Mosque** located on the outskirts of Kensington was the first mosque in England and the **Al Rahma Masjid Mosque** is also conveniently located for the student areas of Smithdown. There is also a prayer room in the Sydney Jones library
- The **Princes Road Synagogue** is just one of many synagogues in the city.





Thriving independent scene - plus all the big names

- The **Baltic Triangle** is where the bustling **Baltic Market** can be found! Here you can grab some quality street food from one of the many stalls. They have meals that cater to pretty much anyone. The Baltic Triangle is also home to Liverpool's **Ghetto Golf** which is a perfect way to de-stress after finishing lectures for the day!
- **Bold Street** is a hub for independent shops and restaurants in Liverpool! My housemates and I love hunting through vintage shops like **COW Liverpool**. **Bold Street** has loads of coffee shops if you fancy a change of scene from the library for a study session- **Soul Café** and **Bold Street Coffee** are two of my favourites
- **Duke Street** is another road bursting with character. The **Duke Street Market** is another great place to try street food from all over the world and **Down the Hatch** serves up some fantastic veggie and vegan meals
- **Liverpool One** shopping centre is the main hub for all your shopping needs! It's full of shops from the Apple store to Pandora, JD sports to John Lewis and also is the place to find the perfect restaurant when you're all shopped out!

Theatre and shows



- Liverpool is home to two **Everyman** venues; the **Everyman Theatre** on **Hope Street** is a great place to watch striking live performances (and possibly get involved too!) while the **Everyman Cinema** in the **Metquarter** hosts new releases whilst giving you the opportunity to order food and drink to your seat. Both worth checking out!
- **Liverpool Empire** is the place to see anything from comedy shows and theatre productions all the way to ballet performances. Whatever you choose to see you'll definitely be entertained
- **St Luke's** - otherwise known as the "Bombed Out church" often hosts screenings of cult classic films (in addition to regular markets and exhibitions)
- And if you just want a good old regular cinema then there's an **Odeon** located in **Liverpool One** shopping centre, and **FACT** on **Wood Street** offering up a range of arthouse films and blockbusters.

Enjoy your time at Liverpool.
Anthonia



TRAIN JOURNEY TIMES FROM LIVERPOOL LIME ST STATION TO:

Edinburgh	3hrs 30min
Glasgow	3hrs 20min
Newcastle	2hrs 55min
York	1hrs 45min
Leeds	1hrs 20min
Manchester	35min
Birmingham	1hrs 35min
Cardiff	3hrs 30min
Bristol	3hrs 15min
Plymouth	5hrs 20min
London	2hrs 10min
Norwich	5hrs
Peterborough	3hrs 10min
Milton Keynes	1hrs 40min

We're in the middle of the country with great transport links to anywhere in the UK.



Liverpool John Lennon Airport offers flight to an extensive list of European destinations, as well as easy connections to long-haul destinations via Frankfurt Airport. Direct flights to other parts of the UK including Belfast are available daily.



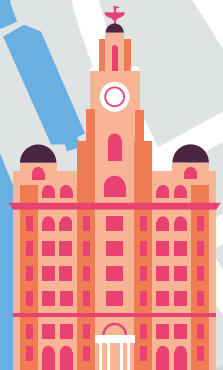


Crosby Beach
Home of Anthony Gormley's Another Place.

The Liver Building



Mersey Ferry

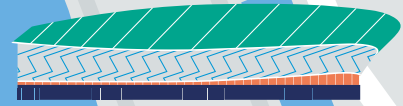


Liverpool ONE

Over 150 retailers – from high street favourites to designer fashion – make this a shopper's paradise

Museum of Liverpool

The Royal Albert Dock



M&S Bank Arena

Major events venue showcasing international music artists, comedy and sport – and home of the Eurovision Song Contest 2023!

A CITY CENTRE CAMPUS



St Georges Hall



Radio City Tower

Lime Street Station



Victoria Gallery and Museum

UNIVERSITY CAMPUS

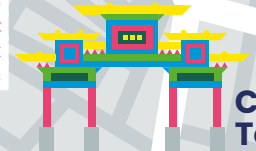
A walk from our University Campus to The Royal Albert Dock takes around 20 minutes.



Metropolitan Cathedral

Bold Street

One of the city's most vibrant food & drink hotspots



China Town



Anglican Cathedral

Baltic Triangle



A trendy hub for independent bars and creative hotspots

Sefton Park and Greenbank Student Village approx 3 miles this way.

ORIGIN *Stories*

UNDERDOG. DETERMINED. LIFE-CHANGER.
JASMIN – LAW STUDENT.

"I'm from a low income, single parent family in Ireland. Aged 18 I'd lost a friend. I was helping to support my family. And I was suffering with my mental health. I didn't get the grades I hoped for in my A levels. But I was determined to go to university. So, I went back to college and got the UCAS points I needed for Liverpool.

Since arriving here, I've thrown myself into everything. I'm president of the Help the Homeless Society. I've travelled on my own. I'm supporting myself as a waitress while maintaining my 2:1 grade. I know I now have the means to escape the poverty cycle and help my family in the future. I'll be graduating a completely different, confident, happy, determined person.



A PIONEERING SPIRIT

Uncover projects that make headlines
and discoveries that make history.
Put your own stamp on it.

THE ORIGINAL

REDBRICK

ORIGINAL THINKING, REAL WORLD IMPACT

As a Russell Group institution, research is central to everything we do. What this means for you is that your teaching will be informed and delivered by real experts who will challenge you to think beyond the textbook and apply your learning to the world around you. You'll graduate not only with a degree from a university ranked in the top 200 institutions worldwide, but with a range of multidisciplinary skills to ensure you stand out from the crowd.



"Liverpool has a real focus on research and its application in the real world; with many teaching staff actively involved in ground-breaking research projects. This inspired me during my undergraduate study; I was able to undertake my own research project with support from my lecturers to gain hands-on experience and develop a range of critical skills. I enjoyed this so much that it influenced my decision to stay on at Liverpool and study for my PhD – something I never imagined I'd be doing when I originally applied for university!"

Joel Levitan
PhD student

WE ARE GLOBALLY RECOGNISED FOR OUR RESEARCH IN...



...Personalised health. Liverpool's world-leading personalised health research supports the unique treatment of individuals based on their genetics and other health data. Projects include improving outcomes for paediatric medicine and investigating whether health inequalities affect access to cancer testing.



...Infectious diseases. Our extensive and pioneering track record in infectious diseases research puts us at the forefront of tackling global health problems, such as the Ebola and Zika viruses, COVID-19 and antimicrobial resistance.



...Advanced materials. The University is revolutionising materials innovation, through materials chemistry and techniques underpinned by automation, robotics and digital capabilities. Our researchers have built an intelligent mobile robot scientist, the first of its kind, which could tackle problems of a scale and complexity that are currently beyond our grasp.



...Digital. From transforming medical surgery with virtual reality to managing population change with big data, digital underpins discovery and applications across the sciences and humanities at Liverpool, by improving research and analysis techniques and broadening research and innovation possibilities.



...Heritage. Our unique cross-fertilisation of humanities and sciences research means we can use lessons from history to solve the problems of today, such as harnessing music in a more methodological way to help us tune into history, culture and memory.



...Starting well, living well and ageing well. Collaborative research across all three Faculties aims to improve health and wellbeing locally, nationally and internationally for us all, from infancy through to adulthood. These include studying the impact of newer forms of advertising on children's food choices, and investigating skeletal muscle ageing in microgravity.



...Climate futures. The global impacts of climate change and environmental degradation are amongst the greatest threats to public health, the global economy and biodiversity. We are aligning our strengths to explore impacts of climate change, develop solutions to environmental challenges and address knowledge gaps.

UNDERGRADUATE PROGRAMMES

With hundreds of options open to you, you're sure to find your perfect programme at Liverpool. These page show our programmes at a glance. Check out our webpages for the full course information. If you're not sure what you want to study, a great place to start are our subject pages, where you can see the full range of our programmes in one place.



[liverpool.ac.uk/
courses](https://liverpool.ac.uk/courses)



FULL PROGRAMME LIST

Please note: the entry requirements listed are typical and correct at the time of going to press, **January 2023**. In addition to A level and BTEC we accept a wide range of other qualifications. For further details, including subject specific requirements and information about GCSEs, please check our website liverpool.ac.uk/courses

Combined degrees

For information about **Combined degrees** and entry requirements when combining programmes, please see liverpool.ac.uk/undergraduate/combined-degrees. Please note: if a programme with this symbol also has a UCAS course code, this is available as a single honours. For programmes only showing this symbol, this is only available as a 50% combination.

Contextual admissions

We are committed to supporting under-represented groups to access higher education through our use of contextual data in admissions. This means that certain specified groups who may have experienced barriers to their education may be made an offer with up to a two grade reduction from our standard offer. **Please note** that some exceptions apply. Read the detail on our contextual admissions strategy liverpool.ac.uk/undergraduate/applying/policies-and-statements/contextual-data to find out more.

Other qualifications

Many programmes will make an alternative offer to students with an EPQ alongside A levels. Other qualifications are accepted. Some programmes will have subject specific requirements. For these and GCSE requirements, see liverpool.ac.uk/courses

Admissions processes

Some programmes may invite applicants to interview, require a portfolio or completion of a test. See liverpool.ac.uk/courses for more information.

Foundation programmes and Access routes

We offer a number of Foundation programmes in the areas of science, engineering and health and life sciences. See programme listings below for details. In addition, the University's Go Higher Access Diploma offers a pathway for students aged over 20 years without formal qualifications to gain entry to various degree programmes across the arts, humanities and social sciences at the University of Liverpool and elsewhere. See page 79 for details.

Global Opportunities

The majority of our subject areas offer a range of Global Opportunities. See pages 32-33 for information.

Programmes may have subject specific requirements. See liverpool.ac.uk/courses

Some programmes in this subject area may offer placements in industry

Accredited programmes are available in this subject area

Combined degrees options available in this subject. See liverpool.ac.uk/undergraduate/combined-degrees

Programme name	UCAS code	A level	BTEC Level 3 National Extended Diploma
Accounting, Finance and Economics			
Accounting and Finance BA (Hons)	N400	AAB	D*D*D in relevant diploma
Accounting and Finance with a Year in Industry BA (Hons)	N401	AAB	D*D*D in relevant diploma
Business Economics BA (Hons)	LN11	AAB	D*D*D in relevant diploma
Business Economics with a Year in Industry BA (Hons)	LN12	AAB	D*D*D in relevant diploma
Economics BSc (Hons)	LI00	AAB	Applications considered
Economics with a Year in Industry BSc (Hons)	LI01	AAB	Applications considered
Finance and Data Analytics BSc (Hons)	N3I2	AAB	D*D*D in relevant diploma
Finance Data Analytics with a Year in Industry BSc (Hons)	N3I4	AAB	D*D*D in relevant diploma
Financial Computing BSc (Hons)	GN34	AAA	Applications considered
Financial Computing with a Year in Industry BSc (Hons)	G3N4	AAA	Applications considered
Law with Accounting and Finance LLB (Hons)	MI01	AAA	D*D*D* in relevant diploma
Mathematics and Economics BSc (Hons)	GL11	ABB	Applications considered
Mathematics with Finance BSc (Hons)	GIN3	AAB	Applications considered
Philosophy, Politics and Economics BA (Hons)	LOV0	AAB	Applications encouraged
Philosophy, Politics and Economics with a Year in Industry BA (Hons)	LOV1	AAB	Applications encouraged

Programmes may have subject specific requirements. See liverpool.ac.uk/courses

Aerospace Engineering

Aerospace Engineering BEng (Hons)	H425	AAB	Applications considered
Aerospace Engineering with a Year in Industry BEng (Hons)	H426	AAB	Applications considered
Aerospace Engineering MEng	H421	AAA	Applications considered
Aerospace Engineering with a Year in Industry MEng	H422	AAA	Applications considered
Aerospace Engineering with Pilot Studies BEng (Hons)	H401	AAB	Applications considered
Aerospace Engineering with Pilot Studies MEng	H402	AAA	Applications considered
Aerospace Engineering with Pilot Studies with a Year in Industry BEng (Hons)	H403	AAB	Applications considered
Aerospace Engineering with Pilot Studies with a Year in Industry MEng	H404	AAA	Applications considered
Avionic Systems BEng (Hons)	H430	AAB	Applications considered
Avionic Systems MEng	H431	AAA	Applications considered
Avionic Systems with a Year in Industry BEng (Hons)	H432	AAB	Applications considered
Engineering Foundation BEng (Hons) (4-year route including a Foundation Year at Carmel College)	HI09	CDD	Applications considered

Programmes (other than Foundation programme) require Maths and a second science. Maths A level is also required alongside BTEC Level 3 National Extended Diploma. See liverpool.ac.uk/courses

Archaeology, Classics and Egyptology

Ancient History BA (Hons)	V110	BBB	Applications encouraged
Archaeology BA (Hons)	V400	BBB	Applications encouraged
Archaeology BSc (Hons)	V402	BBB	Applications encouraged
Archaeology of Ancient Civilisations BA (Hons)	V401	BBB	Applications encouraged
Classics BA (Hons)	Q800	BBB	Applications encouraged
Classical Studies BA (Hons)	Q810	BBB	Applications encouraged
Egyptology BA (Hons)	V410	BBB	Applications encouraged
Evolutionary Anthropology BSc (Hons)	V4B1	BBB	Applications encouraged

Programme name	UCAS code	A level	BTEC Level 3 National Extended Diploma
Architecture, Building and Planning			
Architectural Engineering BEng (Hons)	HK26	AAB	Applications considered
Architectural Engineering MEng	HK28	AAA	Applications considered
Architecture BA (Hons)	K100	AAA	DDD
Architecture MArch	N/A	*	
Civil and Structural Engineering MEng	H220	AAA	Applications considered
Civil Engineering BEng (Hons)	H200	AAB	Applications considered
Civil Engineering with a Year in Industry BEng (Hons)	H203	AAB	Applications considered
Civil Engineering MEng	H202	AAA	Applications considered
Civil Engineering with a Year in Industry MEng	H204	AAA	Applications considered
Engineering Foundation BEng (Hons) (4-year route including a Foundation Year at Carmel College)	H109	CDD	Applications considered
Environment and Planning BA (Hons)	K4L7	BBB	DDD in relevant diploma
Geography and Planning BA (Hons)	L7K4	ABB	D*DD in relevant diploma
Town and Regional Planning MPlan	K400	ABB	D*DD in relevant diploma
Urban Planning BA (Hons)	K430	BBB	DDD in relevant diploma

*** Requires 2:1 BA/BSc Architecture**

Programmes may have subject specific requirements. For Engineering programmes, Maths A level is also required alongside BTEC Level 3 National Extended Diploma. See liverpool.ac.uk/courses

Biological and Biomedical Sciences

Anatomy and Human Biology BSc (Hons)	B110	AAB	D*DD in relevant diploma
Anatomy and Human Biology MBiolSci	B112	AAB	D*D*D in relevant diploma
Biochemistry BSc (Hons)	C700	ABB	D*DD in relevant diploma
Biochemistry MBiolSci	C702	AAB	D*D*D in relevant diploma
Biological Sciences BSc (Hons)	C100	ABB	D*DD in relevant diploma
Biological Sciences MBiolSci	C102	AAB	D*D*D in relevant diploma
Biomedical Sciences BSc (Hons)	C130	ABB	D*DD in relevant diploma
Biomedical Sciences MBiolSci	C132	AAB	D*D*D in relevant diploma
Bioveterinary Science BSc (Hons)	D900	ABB	D*DD in relevant diploma
Bioveterinary Science MBiolSci	D902	AAB	D*D*D in relevant diploma
Marine Biology BSc (Hons)	C160	ABB	D*DD in relevant diploma
Marine Biology MMarBioI	C161	ABB	D*DD in relevant diploma
Marine Biology with Oceanography BSc (Hons)	C1F7	ABB	D*DD in relevant diploma
Microbiology and Infection BSc (Hons)	C500	ABB	D*DD in relevant diploma
Microbiology and Infection MBiolSci	C502	AAB	D*D*D in relevant diploma
Pharmacology BSc (Hons)	B210	AAB	D*DD in relevant diploma
Pharmacology MBiolSci	B212	AAB	D*D*D in relevant diploma
Zoology BSc (Hons)	C300	ABB	D*DD in relevant diploma
Zoology MBiolSci	C302	AAB	D*D*D in relevant diploma
Biological Sciences leading to BSc (Hons) (4-year route with a Foundation Year at Carmel College leading to any of the BSc programmes above)	C108	CCC- CDD	Applications considered

Programmes may have subject specific requirements. See liverpool.ac.uk/courses

Programme name	UCAS code	A level	BTEC Level 3 National Extended Diploma
Business Management and Marketing			
Business			
Business Management BA (Hons)	N100	AAB	D*D*D in relevant diploma
Business Management with a Year in Industry BA (Hons)	N101	AAB	D*D*D in relevant diploma
Finance and Data Analytics BSc (Hons)	N312	AAB	D*D*D in relevant diploma
Finance Data Analytics with a Year in Industry BSc (Hons)	N314	AAB	D*D*D in relevant diploma
International Business BA (Hons)	N120	AAB	D*D*D in relevant diploma
International Business with a Year in Industry BA (Hons)	N121	AAB	D*D*D in relevant diploma
Law with Business LLB (Hons)	T923	AAA	D*D*D* in relevant diploma
Marketing BA (Hons)	N500	AAB	D*D*D in relevant diploma
Marketing with a Year in Industry BA (Hons)	N501	AAB	D*D*D in relevant diploma
Politics and International Business BA (Joint Hons)	LN21	AAB	Applications encouraged

Programmes may have subject specific requirements. See liverpool.ac.uk/courses




Chemistry

Biochemistry BSc (Hons)	C700	ABB	D*DD in relevant diploma
Biochemistry MBiolSci	C702	AAB	D*D*D in relevant diploma
Chemical Sciences BSc (Hons) (4-year route including a Foundation Year at Carmel College)	F108	CDD	Applications considered
Chemistry BSc (Hons)	F100	ABB	D*DD in relevant diploma
Chemistry for Sustainable Energy MChem	F103	AAB	Not accepted
Chemistry MChem	F102	AAB	Not accepted
Chemistry with a Year in Industry BSc (Hons)	F111	ABB	D*DD in relevant diploma
Chemistry with Research in Industry MChem	F161	AAB	Not accepted
Medicinal Chemistry BSc (Hons)	F1B2	ABB	D*DD in relevant diploma
Medicinal Chemistry with Pharmacology MChem	F1BF	AAB	Not accepted
Pharmacology BSc (Hons)	B210	AAB	D*DD in relevant diploma
Pharmacology MBiolSci	B212	AAB	D*D*D in relevant diploma

Programmes may have subject specific requirements. See liverpool.ac.uk/courses

Communication and Media

Communication and Media BA (Hons)	P900	ABB	Applications encouraged
Communication and Media with a Year in Industry BA (Hons)	P901	ABB	Applications encouraged
Communication and Media with Game Design Studies BA (Hons)	I611	ABB	Applications encouraged
Media and Culture BA (Hons)	P3T9	ABB	Applications encouraged
Media, Data and Society BA (Hons)	P3L9	ABB	Applications encouraged
Screen Industries and Entertainment BA (Hons)	W2J9	ABB	Applications encouraged

Programme name	UCAS code	A level	BTEC Level 3 National Extended Diploma
Computer Science   			
Computer Science and Electronic Engineering BEng (Hons)	HH66	ABB	Applications considered
Computer Science and Electronic Engineering MEng	GHK6	AAB	Applications considered
Computer Science and Electronic Engineering with a Year in Industry BEng (Hons)	HG6L	ABB	Applications considered
Computer Science BSc (Hons)	G400	AAA	Applications considered
Computer Science BSc (Hons) (4-year route with a Foundation Year at Carmel College)	G408	CDD	Applications considered
Computer Science MEng	G401	A*AA	Not accepted
Computer Science with a Year in Industry BSc (Hons)	G403	AAA	Applications considered
Computer Science with a Year in Industry MEng	G404	A*AA	Not accepted
Computer Science with Software Development and a Year in Industry BSc (Hons)	G611	AAA	Applications considered
Computer Science with Software Development BSc (Hons)	G610	AAA	Applications considered
Financial Computing BSc (Hons)	GN34	AAA	Applications considered
Financial Computing with a Year in Industry BSc (Hons)	G3N4	AAA	Applications considered
Game Design BA (Hons)	I610	ABB	Applications encouraged
Mathematics and Computer Science BSc (Hons)	GG14	AAA	Applications considered
Mathematics and Computer Science with a Year in Industry BSc (Hons)	GG16	AAA	Applications considered

 Programmes may have subject specific requirements. See liverpool.ac.uk/courses

Dentistry

Bachelor of Dental Surgery BDS	A200	AAA	Not accepted
Dental Therapy BSc (Hons)	B750	ABB	Not accepted
Foundation to Human and Animal Health Professions (Dentistry)	0AAW	*	
Foundation to Human and Animal Health Professions (Dental Therapy)	BAAW	*	




*See liverpool.ac.uk/courses


 Programmes have subject specific requirements. See liverpool.ac.uk/courses

Earth Sciences

Earth Sciences entry route BSc (Hons) (4-year route with a Foundation Year at Carmel College)	F608	CDD	Applications considered
Environmental Geoscience BSc (Hons)	F7F6	ABB	D*DD in relevant diploma
Geology BSc (Hons)	F600	ABB	D*DD in relevant diploma
Geology MEng	F601	AAB	Not accepted
Geology and Geophysics MEng	F641	AAB	Not accepted
Geology with Physical Geography BSc (Hons)	F6F8	ABB	D*DD in relevant diploma
Geology with Physical Geography MEng	FF68	AAB	Not accepted
Geophysics (Geology) BSc (Hons)	F640	ABB	D*DD in relevant diploma


 Programmes may have subject specific requirements. See liverpool.ac.uk/courses

Programme name	UCAS code	A level	BTEC Level 3 National Extended Diploma
Electrical and Electronic Engineering   			
Avionic Systems BEng (Hons)	H430	AAB	Applications considered
Avionic Systems MEng	H431	AAA	Applications considered
Avionic Systems with a Year in Industry BEng (Hons)	H432	AAB	Applications considered
Computer Science and Electronic Engineering BEng (Hons)	HH66	ABB	Applications considered
Computer Science and Electronic Engineering MEng	GHK6	AAB	Applications considered
Computer Science and Electronic Engineering with a Year in Industry BEng (Hons)	HG6L	ABB	Applications considered
Electrical and Electronic Engineering BEng (Hons)	H603	ABB	Applications considered
Electrical and Electronic Engineering MEng	H606	AAB	Applications considered
Electrical and Electronic Engineering with a Year in Industry BEng (Hons)	H605	ABB	Applications considered
Electrical and Electronic Engineering with a Year in Industry MEng	H607	AAB	Applications considered
Engineering Foundation BEng (Hons) (4-year route including a Foundation Year at Carmel College)	HI09	CDD	Applications considered
Mechatronics and Robotic Systems BEng (Hons)	HH67	ABB	Applications considered
Mechatronics and Robotic Systems MEng	HH76	AAB	Applications considered
Mechatronics and Robotic Systems with a Year in Industry BEng (Hons)	HHP7	ABB	Applications considered
Mechatronics and Robotic Systems with a Year in Industry MEng	HHR6	AAB	Applications considered

 Programmes (other than Foundation programme) require Maths and a second science. Maths A level is also required alongside BTEC Level 3 National Extended Diploma for some programmes. See liverpool.ac.uk/courses

Engineering

Architectural Engineering BEng (Hons)	HK26	AAB	Applications considered
Architectural Engineering MEng	HK28	AAA	Applications considered
Civil and Structural Engineering MEng	H220	AAA	Applications considered
Civil Engineering BEng (Hons)	H200	AAB	Applications considered
Civil Engineering with a Year in Industry BEng (Hons)	H203	AAB	Applications considered
Civil Engineering MEng	H202	AAA	Applications considered
Civil Engineering with a Year in Industry MEng	H204	AAA	Applications considered
Engineering BEng (Hons)	HI00	AAB	Applications considered
Engineering MEng	HI01	AAA	Applications considered
Engineering Foundation BEng (Hons) (4-year route including a Foundation Year at Carmel College)	HI09	CDD	Applications considered
Industrial Design BEng (Hons)	3D52	ABB	Applications considered
Industrial Design MEng	6G11	AAB	Applications considered
Product Design Engineering BEng (Hons)	HW24	ABB	Applications considered
Product Design Engineering with a Year in Industry BEng (Hons)	HW26	ABB	Applications considered
Product Design Engineering MEng	HW25	AAB	Applications considered
Product Design Engineering with a Year in Industry MEng	HW27	AAB	Applications considered

 Programmes (other than Foundation programme) require Maths A level. Additional subject specific requirements may apply. Maths A level is also required alongside BTEC Level 3 National Extended Diploma. See liverpool.ac.uk/courses

Programme name	UCAS code	A level	BTEC Level 3 National Extended Diploma
English ⓘ ⓘ			
English BA (Hons) ⓘ	Q300	ABB	Applications considered
English Language BA (Hons) ⓘ	Q310	ABB	Applications considered
English Literature BA (Hons) ⓘ	Q320	ABB	Applications considered
English Literature with Drama Studies BA (Hons)	Q3W4	ABB	Applications considered
English with Game Design Studies BA (Hons)	I612	ABB	Applications considered
English with World Literature BA (Hons)	Q3V2	ABB	Applications considered

ⓘ Programmes require English at grade A. See liverpool.ac.uk/courses

Environmental Sciences ⓘ ⓘ

Biological Sciences leading to BSc (Hons) (4-year route with a Foundation Year at Carmel College)	C108	CDD	Applications considered
Climate Science BSc (Hons)	F764	ABB	D*DD in relevant diploma
Earth Sciences entry route BSc (Hons) (4-year route including a Foundation Year at Carmel College)	F608	CDD	Applications considered
Environment and Planning BA (Hons)	K4L7	BBB	DDD in relevant diploma
Environmental Geoscience BSc (Hons)	F7F6	ABB	D*DD in relevant diploma
Environmental Science BSc (Hons)	F750	ABB	D*DD in relevant diploma
Geography BA (Hons)	L700	ABB	D*DD in relevant diploma
Geography BSc (Hons)	F800	ABB	D*DD in relevant diploma
Geography BSc (Hons) (4-year route with Foundation Year at Carmel College)	F808	CDD	Applications considered
Geography and Oceanography BSc (Hons)	FF78	ABB	D*DD in relevant diploma
Geography and Planning BA (Hons)	L7K4	ABB	D*DD in relevant diploma
Geology and Geophysics MEng	F641	AAB	Not accepted
Geology BSc (Hons)	F600	ABB	D*DD in relevant diploma
Geology MEng	F601	AAB	Not accepted
Geology with Physical Geography BSc (Hons)	F6F8	ABB	D*DD in relevant diploma
Geology with Physical Geography MEng	FF68	AAB	Not accepted
Geophysics (Geology) BSc (Hons)	F640	ABB	D*DD in relevant diploma
Marine Biology BSc (Hons)	C160	ABB	D*DD in relevant diploma
Marine Biology MMarBiol	C161	ABB	D*DD in relevant diploma
Marine Biology with Oceanography BSc (Hons)	C1F7	ABB	D*DD in relevant diploma
Mathematics with Ocean and Climate Sciences BSc (Hons)	G1F7	ABB	Applications considered
Ocean Sciences BSc (Hons)	F700	ABB	D*DD in relevant diploma
Ocean Sciences MEng	F710	AAB	Not accepted

ⓘ Programmes may have subject specific requirements. See liverpool.ac.uk/courses

Film Studies

Film Studies BA (Hons) ⓘ	P303	ABB	Applications encouraged
--------------------------	------	-----	-------------------------

Programme name	UCAS code	A level	BTEC Level 3 National Extended Diploma
Game Design ⓘ ⓘ			
Communication and Media with Game Design Studies BA (Hons)	I611	ABB	Applications encouraged
English with Game Design Studies BA (Hons)	I612	ABB	Applications encouraged
Game Design BSc (Hons) ⓘ	I610	ABB	Applications encouraged
Music with Game Design Studies BA (Hons)	I615	ABB	Applications encouraged
Music Technology with Game Design Studies BA (Hons)	I616	ABB	Applications encouraged
Philosophy with Game Design Studies BA (Hons)	I617	AAB	Applications encouraged
Popular Music with Game Design Studies BA (Hons)	I618	ABB	Applications encouraged

ⓘ Programmes may have subject specific requirements. See liverpool.ac.uk/courses

Geography ⓘ ⓘ

Environment and Planning BA (Hons)	K4L7	BBB	DDD in relevant diploma
Environmental Science BSc (Hons)	F750	ABB	D*DD in relevant diploma
Geography and Oceanography BSc (Hons)	FF78	ABB	D*DD in relevant diploma
Geography and Planning BA (Hons)	L7K4	ABB	D*DD in relevant diploma
Geography BA (Hons)	L700	ABB	D*DD in relevant diploma
Geography BSc (Hons)	F800	ABB	D*DD in relevant diploma
Geography BSc (Hons) (4-year route with Foundation Year at Carmel College)	F808	CDD	Applications considered
Geology with Physical Geography BSc (Hons)	F6F8	ABB	D*DD in relevant diploma
Geology with Physical Geography MEng	FF68	AAB	Not accepted
Town and Regional Planning MPlan	K400	ABB	D*DD in relevant diploma
Urban Planning BA (Hons)	K430	BBB	DDD in relevant diploma

ⓘ Programmes may have subject specific requirements. See liverpool.ac.uk/courses

Health Sciences and allied health professions ⓘ

Diagnostic Radiography BSc (Hons)	B821	BBB	Applications considered
Foundation to Human and Animal Health Professions (Diagnostic Radiography)	4ASC	*	
Foundation to Human and Animal Health Professions (Nursing)	Y4AS	*	
Foundation to Human and Animal Health Professions (Occupational Therapy)	47OH	*	
Foundation to Human and Animal Health Professions (Orthoptics)	P0HG	*	
Foundation to Human and Animal Health Professions (Physiotherapy)	4RAD	*	
Foundation to Human and Animal Health Professions (Therapeutic Radiotherapy and Oncology)	0W21	*	
Nursing BN (Hons)	B700	BBB	Applications considered
Occupational Therapy BSc (Hons)	B920	BBB	Applications considered
Orthoptics BSc (Hons)	B520	BBB	Applications considered
Physiotherapy BSc (Hons)	B160	AAB	Applications considered
Therapeutic Radiography and Oncology BSc (Hons)	B822	BBB	Applications considered

ⓘ Programmes may have subject specific requirements. See liverpool.ac.uk/courses

*See liverpool.ac.uk/courses

Programme name	UCAS code	A level	BTEC Level 3 National Extended Diploma
History			
Ancient History BA (Hons)	V110	BBB	Applications encouraged
History BA (Hons)	V100	ABB	Applications encouraged
Irish Studies			
Irish Studies BA (Hons)	Q540	BBB	Applications encouraged
Languages and Cultures			
Basque			
Catalan			
Chinese Studies			
Chinese			
French BA (Hons)	R120	BBB	Applications encouraged
German BA (Hons)	R220	BBB	Applications encouraged
Hispanic Studies BA (Hons)	RR45	BBB	Applications encouraged
Italian BA (Hons)	R300	BBB	Applications encouraged
Mathematics with Languages BSc (Hons)	G19R	ABB	Applications considered
Modern Languages Triple Subject BA (Hons)	T900	ABB	Applications encouraged
Portuguese			
Spanish			
Programmes may have subject specific requirements. See liverpool.ac.uk/courses			
Law			
Law LLB (Hons)	M100	AAA	D*D*D* in relevant diploma
Law with Business LLB (Hons)	T923	AAA	D*D*D* in relevant diploma
Law with a Year Abroad LLB (Hons)	M111	AAA	D*D*D* in relevant diploma
Law with Criminology LLB (Hons)	T928	AAA	D*D*D* in relevant diploma
Law with Philosophy LLB (Hons)	T944	AAA	D*D*D* in relevant diploma
Law with Politics LLB (Hons)	T945	AAA	D*D*D* in relevant diploma
This Law degree takes students through the academic stage of the route to practice.			
Mathematics			
Actuarial Mathematics BSc (Hons)	NG31	AAB	Applications considered
Mathematical Physics MMath	FGH1	AAB	Applications considered
Mathematical Sciences entry route leading to BSc (Hons) (4-year route with Foundation Year at Carmel College)	G108	CDD	Applications considered
Mathematics BSc (Hons)	G100	ABB	D*DD in relevant diploma
Mathematics MMath	G101	AAB	Applications considered
Mathematics and Computer Science BSc (Hons)	GG14	AAA	Applications considered
Mathematics and Computer Science with a Year in Industry BSc (Hons)	GG16	AAA	Applications considered
Mathematics and Economics BSc (Hons)	GL11	ABB	D*DD in relevant diploma
Mathematics and Music Technology BSc (Hons)	GIW3	ABB	D*DD in relevant diploma
Mathematics and Philosophy BA (Joint Hons)	GV15	ABB	Applications encouraged
Mathematics and Statistics BSc (Hons)	GG13	ABB	D*DD in relevant diploma

Programme name	UCAS code	A level	BTEC Level 3 National Extended Diploma
Mathematics with Finance BSc (Hons)	GIN3	AAB	Applications considered
Mathematics with Languages BSc (Hons)	G19R	ABB	Applications considered
Mathematics with Ocean and Climate Sciences BSc (Hons)	GIF7	ABB	Applications considered
Physics and Mathematics BSc (Joint Hons)	FG31	ABB	D*DD in relevant diploma
Theoretical Physics MPhys	F344	AAB	Applications considered
Programmes (other than Foundation programme) require Maths A level grade A. Additional subject specific requirements may apply. See liverpool.ac.uk/courses			
Mechanical Engineering			
See also Mechatronics programmes under Electrical Engineering and Electronics			
Engineering Foundation BEng (Hons) (4-year route including a Foundation Year at Carmel College)	H109	CDD	Applications considered
Mechanical Engineering BEng (Hons)	H300	AAB	Applications considered
Mechanical Engineering with a Year in Industry BEng (Hons)	H302	AAB	Applications considered
Mechanical Engineering MEng	H301	AAA	Applications considered
Mechanical Engineering with a Year in Industry MEng (Hons)	H303	AAA	Applications considered
Programmes (other than Foundation programme) require Maths and a second science. Maths A level is also required alongside BTEC Level 3 National Extended Diploma. See liverpool.ac.uk/courses			
Medicine			
Foundation to Human and Animal Health Professions (Medicine)	789S	*	
Medicine and Surgery MBChB	A100	AAA	Not accepted in lieu of A levels
*See liverpool.ac.uk/courses			
Programmes have subject specific requirements. See liverpool.ac.uk/courses			
At the time of going to print, the School of Medicine is currently considering the reintroduction of our graduate-entry Medicine programme (A101) at a date currently TBC (potentially for 2024 entry). You can check the status of this at liverpool.ac.uk/medicine/study-with-us/undergraduate/admissions-information/			
Music			
Mathematics and Music Technology BSc (Hons)	GIW3	ABB	D*DD in relevant diploma
Music and Popular Music BA (Hons)	W301	ABB	Applications encouraged
Music and Technology BA (Hons)	W370	ABB	Applications encouraged
Music Technology with Game Design Studies BA (Hons)	I616	ABB	Applications encouraged
Music BA (Hons)	W300	ABB	Applications encouraged
Music with Game Design Studies BA (Hons)	I615	ABB	Applications encouraged
Popular Music BA (Hons)	W340	ABB	Applications encouraged
Popular Music with Game Design Studies BA (Hons)	I618	ABB	Applications encouraged
Programmes may have subject specific requirements. See liverpool.ac.uk/courses			

Programme name	UCAS code	A level	BTEC Level 3 National Extended Diploma
Philosophy			
Law with Philosophy LLB (Hons)	T944	AAA	D*D*D* in relevant diploma
Mathematics and Philosophy BA (Joint Hons)	GV15	ABB	Applications encouraged
Philosophy BA (Hons)	V500	AAB	Applications encouraged
Philosophy with Game Design Studies BA (Hons)	I617	AAB	Applications encouraged
Philosophy, Politics and Economics BA (Hons)	LOV0	AAB	Applications encouraged
Philosophy, Politics and Economics with a Year in Industry BA (Hons)	LOV1	AAB	Applications encouraged

Programmes may have subject specific requirements. See liverpool.ac.uk/courses

Physics			
Astrophysics MPhys	F521	AAB	Applications considered
Mathematical Physics MMath	FGH1	AAB	Applications considered
Physical Sciences entry route leading to BSc (Hons) (4-year route including a Foundation Year at Carmel College)	F308	CDD	Applications considered
Physics BSc (Hons)	F300	ABB	Applications considered
Physics MPhys	F303	AAB	Applications considered
Physics with Astronomy BSc (Hons)	F3F5	ABB	Applications considered
Physics and Mathematics BSc (Joint Hons)	FG31	ABB	D*DD in relevant diploma
Physics with Medical Applications BSc (Hons)	F350	ABB	Applications considered
Physics with Nuclear Science BSc (Hons)	F390	ABB	Applications considered
Theoretical Physics MPhys	F344	AAB	Applications considered

Programmes (other than Foundation programme) require Maths and Physics. See liverpool.ac.uk/courses

Politics			
International Relations BA (Hons)	L240	AAB	Applications encouraged
Law with Politics LLB (Hons)	T945	AAA	D*D*D* in relevant diploma
Philosophy, Politics and Economics BA (Hons)	LOV0	AAB	Applications encouraged
Philosophy, Politics and Economics with a Year in Industry BA (Hons)	LOV1	AAB	Applications encouraged
Politics BA (Hons)	L210	AAB	Applications encouraged

Programmes may have subject specific requirements. See liverpool.ac.uk/courses

Psychology			
Psychology BSc (Hons)	C800	AAB	D*DD in relevant diploma
Psychology BSc (Hons) (2+2 with foundation element)	C801	*	
Psychology MPsychSci (Hons)	C804	AAA	D*D*D in relevant diploma

*Flexible entry requirements. For further information, visit wmc.ac.uk

Programmes (other than Foundation programme) require at least one science A level. See liverpool.ac.uk/courses

Programme name	UCAS code	A level	BTEC Level 3 National Extended Diploma
Sociology, Social Policy and Criminology			
Criminology BA (Hons)	L311	ABB	Applications encouraged
Criminology with Sociology BA (Hons)	T958	ABB	Applications encouraged
Criminology with Social Policy BA (Hons)	T957	ABB	Applications encouraged
Law with Criminology LLB (Hons)	T928	AAA	D*D*D* in relevant diploma
Social Policy			
Sociology BA (Hons)	L302	ABB	Applications encouraged
Sociology with Criminology BA (Hons)	T809	ABB	Applications encouraged
Sociology with Social Policy BA (Hons)	T828	ABB	Applications encouraged

Veterinary Science			
Bioveterinary Science BSc (Hons)	D900	ABB	D*DD in relevant diploma
Bioveterinary Science MBiolSci	D902	AAB	D*D*D in relevant diploma
Foundation to Human and Animal Health Professions (Veterinary Science)	74JJ	*	
Veterinary Science BVSc	D100	AAA	See website

*See liverpool.ac.uk/courses

Programmes may have subject specific requirements. See liverpool.ac.uk/veterinary-science/undergraduate/prospective-applicants





ORIGIN *Stories*

**RISK-TAKER. RESILIENT. HIGH-ACHIEVER.
FARHANA – FINAL YEAR DENTAL STUDENT.**

"I studied pharmacology in my hometown of Cardiff and Dentistry was always in the back of my mind as a future career path. So, in my final year of pharmacology, I thought I'd give it a shot and apply. It was outside of my comfort zone. There are only a limited number of dental schools that take on graduates (four to be precise!) So, I felt I was taking a great risk applying to UoL, considering how competitive it would be to gain a place. Moving away from my hometown was also quite daunting.

After securing my place, I found it difficult to find work experience. I created a whole excel spreadsheet to work through. I got a lot of rejections, but I kept on going. I remained resilient. And I kept believing that eventually someone would give me a break. I think it was the 96th or 99th place that offered me work experience. That was the gateway I needed to get me to where I am now."

YOUR APPLICATION

We welcome applications from all over the world, and it's our aim to make the process of applying as smooth as possible.

Making your application

Applications for full-time undergraduate study should be made via UCAS on their online application system at ucas.com using code **LVRPL L41**.

The UCAS deadline for non-clinical programmes is 31 January 2024 (for international students the deadline is normally the end of June). Please note that these dates may be subject to change, so applicants should check the UCAS website for the most up to date information.

Applications for Medicine, Dentistry and Veterinary Science

The current UCAS deadline for applications for Medicine, Dentistry and Veterinary Science is 16 October in the year before you wish to begin university. However, please note that UCAS deadlines may be subject to review so you should check the UCAS website for details. You may apply to up to four choices for Medicine, Dentistry or Veterinary Science and you may use your fifth choice for an alternative programme without prejudice to your application for Medicine, Dentistry or Veterinary Science.

Year in China/Year Abroad applications

If you are planning to study with a Year in China or Year Abroad please refer to the application guidelines here liverpool.ac.uk/global-opportunities

How your application is assessed

Full information on the way in which we will assess your application is available on our website at liverpool.ac.uk/ug-admissions

We have an Undergraduate Admissions Policy which sets out the general principles we follow, when making decisions. The policy document may be found online at liverpool.ac.uk/ug-admissions

Entry requirements

For full details on the programmes we offer and detailed entrance requirements, visit liverpool.ac.uk/study/undergraduate

For information on English language entry requirements contact the International Recruitment, Relations and Global Opportunities team
E: ugrecruitment@liverpool.ac.uk

Further information about acceptable international qualifications can be found at liverpool.ac.uk/study/international

Disabled students

We give equal consideration to all applicants and welcome applications from students with disabilities. Please contact the Disability Support team on **T: +44 (0)151 794 4714** to discuss your support needs before you submit your UCAS application.

Preparatory programmes partner colleges

For some programmes with foundation elements, you will study the first part at a partner college. Such programmes are listed in the programme listing of this prospectus (see pages 64–75).

Go Higher

The University offers the 'Go Higher' programme as a route into Higher Education for people who are not applying directly from school or college, and who do not have traditional entry qualifications. Go Higher develops your academic skills, provides a broad foundation for your successful transition to university and enables you to apply for a diverse range of degrees in Humanities. liverpool.ac.uk/gohigher

Applicants who have been in the care of a UK Local Authority

The University is keen to support applicants who are, or who have been, in the care of a UK Local Authority, and a member of our support services team is available to offer advice to applicants who have indicated on the UCAS form that they are or have been in care. For further details, contact Ben Toleman
E: btoleman@liverpool.ac.uk

Mature students

We welcome applications from candidates who are not applying directly from school or college, or who have non-standard qualifications, or who wish work or life experience to be taken into account as part of their application.

For further information see liverpool.ac.uk/study/undergraduate/applying/mature-students

Diversity and equality

We attach the greatest importance to our policies and activities to promote diversity and equality of opportunity. Full details on these policies can be found online at liverpool.ac.uk/equality-diversity-inclusion

Disrupted education

We offer additional support to young people who have been affected by "disrupted education". See liverpool.ac.uk/widening-participation/secondary-disruptededucationprogramme

Contextual admissions

Building on our long-standing success in widening participation, we have adopted the use of contextual offers for applicants in the main UCAS recruitment cycle. This has provided up to a two-grade reduction* from the standard offer for the following under-represented groups:

- Students from English neighbourhoods with historically low participation in Higher Education (known as POLAR 4 Quintile 1 postcodes, after the dataset used by the Office for Students to track this metric. Please note, the source of this data is subject to review.)
- UK Care Experienced students (ie qualifying students who have spent any amount of time in Local Authority care and meet associated eligibility criteria used nationally).

*Exceptions may apply for further details please contact UK Admissions.

For more information please visit our website liverpool.ac.uk/undergraduate/applying/policies-and-statements/contextual-data/contextual-admissions

CONNECT WITH US

Open Days will be held on:

- Friday 23 June 2023
- Saturday 24 June 2023
- Saturday 23 September 2023
- Saturday 14 October 2023



Register at
[liverpool.ac.uk/
openday](https://liverpool.ac.uk/openday)



UNDERGRADUATE ON-DEMAND

Our Undergraduate on-demand webpages are the place to explore our campus, programmes of study, accommodation and much more with a mix of live and on-demand sessions. Here you'll find a warm welcome from our staff and students as you delve into your subject area of choice, as well as life on campus and in the city. Discover it all, and find your home at Liverpool.

[liverpool.ac.uk/
undergraduate/on-demand](https://liverpool.ac.uk/undergraduate/on-demand)



Explore our
undergraduate
on-demand
content



Chat with our students

Our students are the experts on what it's like to be at Liverpool. There's no need to wait for one of our virtual events to start a conversation with them. They're ready and waiting to answer your questions.

liverpool.ac.uk/study/chat



Chat with
our students

Explore our virtual tour

Our beautiful campus in the city offers you the best of all worlds. A compact campus where all our facilities and services are within a short distance, with everything our vibrant city has to offer just a short walk down the hill.

liverpool.ac.uk/virtual-tour



Take a look
around our
virtual tour

Get in touch

Got a question about any of our programmes or any aspect of study at Liverpool? Contact our enquiries team. [liverpool.ac.uk/undergraduate/
contact-us](https://liverpool.ac.uk/undergraduate/contact-us)



Get in touch

INDEX

For academic programmes please see the full programme list, pages 64–75.

A

Accommodation **20–23**
Access routes **64, 79**
Admissions **78–79**
Alumni **28–29**
Applications **78–79**
Application deadline **78–79**
Art and museums **46–52**

B

Bursaries see *Plan your finances* **16**

C

Campus map **84–85**
Campus Residences **20–23**
Careers **26–27**
Childcare facilities **12**
City map **54–55**
Combining degrees **64**
Computing Services **19**
Counselling Service **14**
Contextual offers **79**
Crown Place **20–23**

D

Disabled Students
– Admissions **79**
– Support **12**

E

Elite Athlete Support **39**
Employability **26–27**
English Language Centre **09**
Entry requirements **78**

F

Faith **13**
Faith and financial support **16**
– Accommodation **20–23**
– Tuition fees **16**
Foundation degrees **64**

G

Global Opportunities **32–33**
Go Higher **64, 79**
Graduates **28–29**
Guild of Students **34–35**
Greenbank Student Village **20–23**

H

Halls **20–23**
How to apply **78–79**
– Accommodation **20–23**
– Applications and admissions **78**

I

International community **09**
International Advice and Guidance team **13**

L

Languages at Liverpool **40–41**
Learning resources **18–19**
Libraries **19**
Life in the city **46–55**
Liverpool Guild of Students **34–35**

M

Map (Campus) **84–85**
Map (City) **54–55**
Mature Students **79**
Melville Grove **20–23**
Mental Health Advisory Service **14**
Money Advice and Guidance **17**
Music on campus **42–43**

N

Nightlife **46–52**

O

Open Days **80**

P

Philharmonic Court **20–23**

R

Religion **13**
Research **60–61**
Restaurants **46–52**

S

Shopping **46–52**
Societies **34–35**
Sport Liverpool **38–39**
Support **12–15**
– Care leavers
– Childcare
– Counselling
– Disabled students
– Finance
– Health
– International students
– Religion

T

Terms and conditions **82**
Theatre **46–52**
Transport links **53**
Tuition fees **16**
Tung Auditorium **43**

U

UCAS **78**

V

Vine Court **20–23**
Virtual tour **81**
Visas **09**

W

Widening Participation **08**

X

Xi'an Jiaotong–Liverpool University (XJTLU) **32**

Y

Year in China **32**
Year Abroad **32**
Yoko Ono Lennon Centre **42–43**



Terms and conditions

For details please see liverpool.ac.uk/study/undergraduate/applying/terms

CITY CAMPUS



Victoria Gallery & Museum

Sports and Fitness Centre

Vine Court

Harold Cohen Library

Liverpool Guild of Students

Sydney Jones Library

Crown Place

We are big ideas and bold,
independent thinkers.

Individual triumphs
and world firsts

Lively debates and
life-changing research.

Flashes of inspiration and
hard-earned breakthroughs.

We are the original redbrick.

Undergraduate Prospectus 2024

University of Liverpool
L69 7ZX

liverpool.ac.uk

Undergraduate enquiries and applications

T: +44 (0)151 794 5927

E: ugrecruitment@liverpool.ac.uk

**[liverpool.ac.uk/undergraduate/
contact-us](https://liverpool.ac.uk/undergraduate/contact-us)**

If you need any sections of this
prospectus in an alternative
format, please contact:

T: +44 (0)151 794 5927